

For Research Use Only

AKAP1 Recombinant antibody, PBS Only (Detector)

Catalog Number: 85119-4-PBS



Basic Information

Catalog Number: 85119-4-PBS	GenBank Accession Number: BC000729	Purification Method: Protein A purification
Size: 100ug , Concentration: 1 mg/ml by Nanodrop;	GeneID (NCBI): 8165	CloneNo.: 242763D3
Source: Rabbit	UNIPROT ID: Q92667	
Isotype: IgG	Full Name: A kinase (PRKA) anchor protein 1	
Immunogen Catalog Number: AG8037	Calculated MW: 97 kDa	

Applications

Tested Applications:
Sandwich ELISA, Indirect ELISA, Sample test

Species Specificity:
human

Product Information

85119-4-PBS targets AKAP1 as part of a matched antibody pair:

MP01840-3: 85119-5-PBS capture and 85119-4-PBS detection (validated in Sandwich ELISA)

Unconjugated rabbit recombinant monoclonal antibody in PBS only (BSA and azide free) storage buffer at a concentration of 1 mg/mL, ready for conjugation. Created using Proteintech's proprietary in-house recombinant technology. Recombinant production enables unrivalled batch-to-batch consistency, easy scale-up, and future security of supply.

This conjugation ready format makes antibodies ideal for use in many applications including: ELISAs, multiplex assays requiring matched pairs, mass cytometry, and multiplex imaging applications. Antibody use should be optimized by the end user for each application and assay.

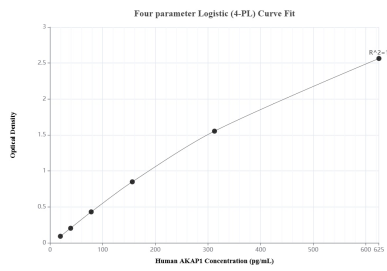
Storage

Storage:
Store at -80°C.
Storage Buffer:
PBS Only

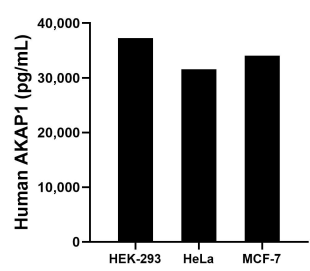
For technical support and original validation data for this product please contact:
T: 1 (888) 4PTGLAB (1-888-478-4522) (toll free in USA), or 1(312) 455-8498 (outside USA)
E: proteintech@ptglab.com
W: ptglab.com

This product is exclusively available under Proteintech Group brand and is not available to purchase from any other manufacturer.

Selected Validation Data



Sandwich ELISA standard curve of MP01840-3, Human AKAP1 Recombinant Matched Antibody Pair - PBS only. 85119-5-PBS was coated to a plate as the capture antibody and incubated with serial dilutions of standard Ag8037. 85119-4-PBS was HRP conjugated as the detection antibody. Range: 19.5-625 pg/mL



The mean AKAP1 concentration was determined to be 37,245.6 pg/mL in HEK-293 cell extract based on a 2.7 mg/mL extract load, 31,538.9 pg/mL in HeLa cell extract based on a 1.5 mg/mL extract load and 34,041.8 pg/mL in MCF-7 cell extract based on a 3.5 mg/mL extract load.