

For Research Use Only

GPX8 Recombinant antibody, PBS Only (Detector)

Catalog Number: 85120-1-PBS



Basic Information

Catalog Number: 85120-1-PBS	GenBank Accession Number: BC029424	Purification Method: Protein A purification
Size: 100ug , Concentration: 1 mg/ml by Nanodrop;	GeneID (NCBI): 493869	CloneNo.: 242769C6
Source: Rabbit	UNIPROT ID: Q8TED1	
Isotype: IgG	Full Name: glutathione peroxidase 8 (putative)	
Immunogen Catalog Number: AG9930	Calculated MW: 209 aa, 24 kDa	
	Observed MW: 24 kDa	

Applications

Tested Applications:
WB, Cytometric bead array, Indirect ELISA

Species Specificity:
human, mouse, rat

Product Information

85120-1-PBS targets GPX8 as part of a matched antibody pair:

MP01832-1: 85120-3-PBS capture and 85120-1-PBS detection (validated in Cytometric bead array)

MP01832-2: 85120-2-PBS capture and 85120-1-PBS detection (validated in Cytometric bead array)

Unconjugated rabbit recombinant monoclonal antibody in PBS only (BSA and azide free) storage buffer at a concentration of 1 mg/mL, ready for conjugation. Created using Proteintech's proprietary in-house recombinant technology. Recombinant production enables unrivalled batch-to-batch consistency, easy scale-up, and future security of supply.

This conjugation ready format makes antibodies ideal for use in many applications including: ELISAs, multiplex assays requiring matched pairs, mass cytometry, and multiplex imaging applications. Antibody use should be optimized by the end user for each application and assay.

Background Information

GPX8 (Probable glutathione peroxidase 8) is also named as GSHPx-8 and belongs to the glutathione peroxidase family. Glutathione peroxidase (GPx) reduces hydroperoxides, including hydrogen peroxides, in the presence of reduced glutathione as a means of protecting organisms from oxidative damage. Several GPx isozymes have been identified in animal cells and these have been classified into different groups according to their cellular location and substrate specificity. In humans, eight types of GPx have been identified from GPx1 to GPx8. The full length GPX8 has 209 amino acids and the molecular weight is 24 kDa.

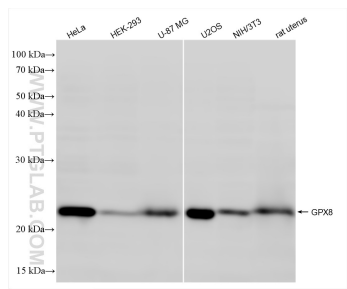
Storage

Storage:
Store at -80°C.
Storage Buffer:
PBS Only

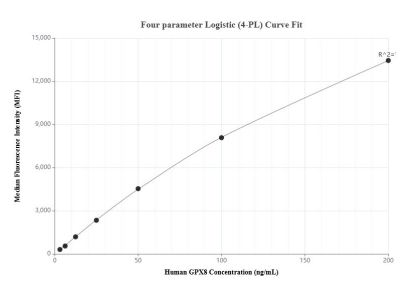
For technical support and original validation data for this product please contact:
T: 1 (888) 4PTGLAB (1-888-478-4522) (toll free in USA), or 1(312) 455-8498 (outside USA)
E: proteintech@ptglab.com
W: ptglab.com

This product is exclusively available under Proteintech Group brand and is not available to purchase from any other manufacturer.

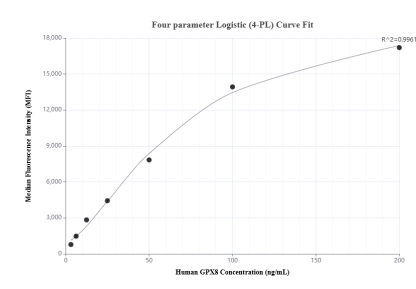
Selected Validation Data



Various lysates were subjected to SDS PAGE followed by western blot with 85120-1-RR (GPX8 antibody) at dilution of 1:10000 incubated at room temperature for 1.5 hours. This data was developed using the same antibody clone with 85120-1-PBS in a different storage buffer formulation.



Cytometric bead array standard curve of MP01832-2, GPX8 Recombinant Matched Antibody Pair, PBS Only. Capture antibody: 85120-2-PBS. Detection antibody: 85120-1-PBS. Standard: Ag9930. Range: 3.125-200 ng/mL.



Cytometric bead array standard curve of MP01832-1, GPX8 Recombinant Matched Antibody Pair, PBS Only. Capture antibody: 85120-3-PBS. Detection antibody: 85120-1-PBS. Standard: Ag9930. Range: 3.125-200 ng/mL.