

For Research Use Only

GPX8 Recombinant antibody

Catalog Number: 85120-1-RR



Basic Information

Catalog Number: 85120-1-RR	GenBank Accession Number: BC029424	Purification Method: Protein A purification
Size: 100ul , Concentration: 1000 µg/ml by Nanodrop;	GeneID (NCBI): 493869	CloneNo.: 242769C6
Source: Rabbit	UNIPROT ID: Q8TED1	Recommended Dilutions: WB 1:5000-1:50000
Isotype: IgG	Full Name: glutathione peroxidase 8 (putative)	
Immunogen Catalog Number: AG9930	Calculated MW: 209 aa, 24 kDa	
	Observed MW: 24 kDa	

Applications

Tested Applications: WB, ELISA	Positive Controls: WB : HeLa cells, HEK-293 cells, U-87 MG cells, U2OS cells, NIH/3T3 cells, rat uterus tissue
Species Specificity: human, mouse, rat	

Background Information

GPX8 (Probable glutathione peroxidase 8) is also named as GSHPx-8 and belongs to the glutathione peroxidase family. Glutathione peroxidase (GPx) reduces hydroperoxides, including hydrogen peroxides, in the presence of reduced glutathione as a means of protecting organisms from oxidative damage. Several GPx isozymes have been identified in animal cells and these have been classified into different groups according to their cellular location and substrate specificity. In humans, eight types of GPx have been identified from GPx1 to GPx8. The full length GPX8 has 209 amino acids and the molecular weight is 24 kDa.

Storage

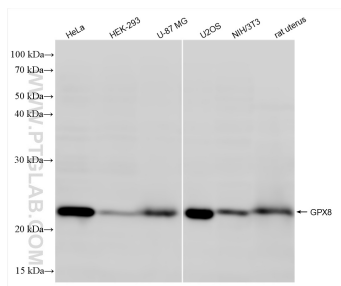
Storage:
Store at -20°C. Stable for one year after shipment.
Storage Buffer:
PBS with 0.02% sodium azide and 50% glycerol pH 7.3.
Aliquoting is unnecessary for -20°C storage

*** 20ul sizes contain 0.1% BSA

For technical support and original validation data for this product please contact:
T: 1 (888) 4PTGLAB (1-888-478-4522) (toll free in USA), or 1(312) 455-8498 (outside USA)
E: proteintech@ptglab.com
W: ptglab.com

This product is exclusively available under Proteintech Group brand and is not available to purchase from any other manufacturer.

Selected Validation Data



Various lysates were subjected to SDS PAGE followed by western blot with 85120-1-RR (GPX8 antibody) at dilution of 1:10000 incubated at room temperature for 1.5 hours.