

For Research Use Only

GYS2 Recombinant antibody, PBS Only

Catalog Number: 85122-4-PBS



Basic Information

Catalog Number: 85122-4-PBS	GenBank Accession Number: BC126310	Purification Method: Protein A purification
Size: 100ug, Concentration: 1 mg/ml by Nanodrop;	GeneID (NCBI): 2998	CloneNo.: 242595F10
Source: Rabbit	UNIPROT ID: P54840	
Isotype: IgG	Full Name: glycogen synthase 2 (liver)	
Immunogen Catalog Number: AG18012	Calculated MW: 703 aa, 81 kDa	
	Observed MW: 81 kDa	

Applications

Tested Applications:
WB, Indirect ELISA

Species Specificity:
human, mouse, rat

Background Information

GYS2 (Glycogen Synthase 2) is a key enzyme involved in the synthesis of glycogen in the liver. It catalyzes the addition of glucose molecules to the growing glycogen chain, playing a crucial role in maintaining glucose homeostasis. GYS2 is essential for liver glycogen synthesis, which acts as a critical energy reserve for maintaining blood glucose levels, especially during fasting or prolonged exercise. Impairment of GYS2 function can lead to glycogen storage disease type 0 (GSD-0), characterized by hypoglycemia and liver glycogen deficiency. The GYS2 is highest expressed in the liver, and its expression in liver was significantly higher than other tissues. (PMID:39150597; PMID:37574425)

Storage

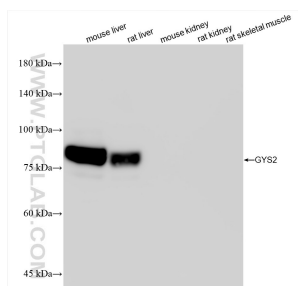
Storage:
Store at -80°C.

Storage Buffer:
PBS Only

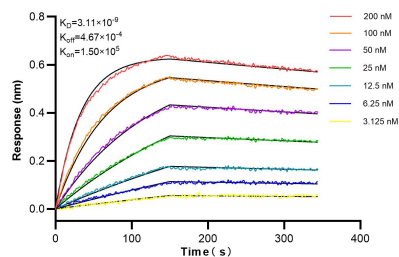
For technical support and original validation data for this product please contact:
T: 1 (888) 4PTGLAB (1-888-478-4522) (toll free in USA), or 1(312) 455-8498 (outside USA)
E: proteintech@ptglab.com
W: ptglab.com

This product is exclusively available under Proteintech Group brand and is not available to purchase from any other manufacturer.

Selected Validation Data



Various lysates were subjected to SDS PAGE followed by western blot with 85122-4-RR (GYS2 antibody) at dilution of 1:10000 incubated at room temperature for 1.5 hours. This data was developed using the same antibody clone with 85122-4-PBS in a different storage buffer formulation.



Biolayer interferometry (BLI) kinetic assays of 85122-4-RR against Human GYS2 were performed. The affinity constant is 3.11 nM.