

For Research Use Only

# GYS2 Recombinant antibody

Catalog Number: 85122-4-RR



## Basic Information

Catalog Number:

85122-4-RR

Size:

100ul, Concentration: 1000 µg/ml by Nanodrop;

Source:

Rabbit

Isotype:

IgG

Immunogen Catalog Number:

AG18012

GenBank Accession Number:

BC126310

GeneID (NCBI):

2998

UNIPROT ID:

P54840

Full Name:

glycogen synthase 2 (liver)

Calculated MW:

703 aa, 81 kDa

Observed MW:

81 kDa

Purification Method:

Protein A purification

CloneNo.:

242595F10

Recommended Dilutions:

WB 1:5000-1:50000

## Applications

Tested Applications:

WB, ELISA

Species Specificity:

human, mouse, rat

Positive Controls:

WB : mouse liver tissue,

## Background Information

GYS2 (Glycogen Synthase 2) is a key enzyme involved in the synthesis of glycogen in the liver. It catalyzes the addition of glucose molecules to the growing glycogen chain, playing a crucial role in maintaining glucose homeostasis. GYS2 is essential for liver glycogen synthesis, which acts as a critical energy reserve for maintaining blood glucose levels, especially during fasting or prolonged exercise. Impairment of GYS2 function can lead to glycogen storage disease type 0 (GSD-0), characterized by hypoglycemia and liver glycogen deficiency. The GYS2 is highest expressed in the liver, and its expression in liver was significantly higher than other tissues. (PMID:39150597; PMID:37574425)

## Storage

Storage:

Store at -20°C. Stable for one year after shipment.

Storage Buffer:

PBS with 0.02% sodium azide and 50% glycerol pH 7.3.

Aliquoting is unnecessary for -20°C storage

\*\*\* 20ul sizes contain 0.1% BSA

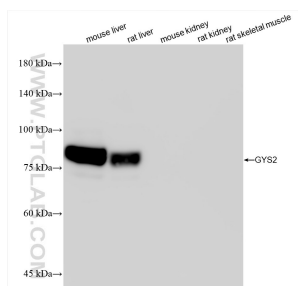
For technical support and original validation data for this product please contact:

T: 1 (888) 4PTGLAB (1-888-478-4522) (toll free in USA), or 1(312) 455-8498 (outside USA)

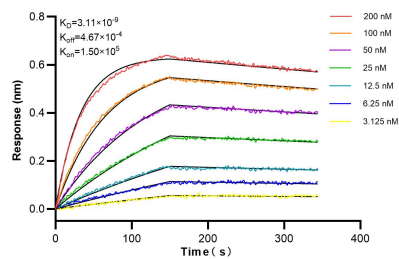
E: [proteintech@ptglab.com](mailto:proteintech@ptglab.com)  
W: [ptglab.com](http://ptglab.com)

This product is exclusively available under Proteintech Group brand and is not available to purchase from any other manufacturer.

## Selected Validation Data



Various lysates were subjected to SDS PAGE followed by western blot with 85122-4-RR (GYS2 antibody) at dilution of 1:10000 incubated at room temperature for 1.5 hours.



Biolayer interferometry (BLI) kinetic assays of 85122-4-RR against Human GYS2 were performed. The affinity constant is 3.11 nM.