

For Research Use Only

# Mouse PON2 Recombinant antibody, PBS Only (Detector)

Catalog Number: 85126-2-PBS



## Basic Information

<b>Catalog Number:</b> 85126-2-PBS	<b>GenBank Accession Number:</b> NM_183308.2	<b>Purification Method:</b> Protein A purification
<b>Size:</b> 100ug , Concentration: 1 mg/ml by Nanodrop;	<b>GeneID (NCBI):</b> 330260	<b>CloneNo.:</b> 242673D8
<b>Source:</b> Rabbit	<b>UNIPROT ID:</b> Q62086	
<b>Isotype:</b> IgG	<b>Full Name:</b> paraoxonase 2	
	<b>Calculated MW:</b> 40 kDa	

## Applications

**Tested Applications:**  
Cytometric bead array, Sandwich ELISA, Indirect ELISA,  
Sample test

**Species Specificity:**  
mouse

## Product Information

85126-2-PBS targets Pon2 as part of a matched antibody pair.

MP01843-1: 85126-4-PBS capture and 85126-2-PBS detection (validated in Cytometric bead array, Sandwich ELISA)

Unconjugated rabbit recombinant monoclonal antibody in PBS only (BSA and azide free) storage buffer at a concentration of 1 mg/mL, ready for conjugation. Created using Proteintech's proprietary in-house recombinant technology. Recombinant production enables unrivalled batch-to-batch consistency, easy scale-up, and future security of supply.

This conjugation ready format makes antibodies ideal for use in many applications including: ELISAs, multiplex assays requiring matched pairs, mass cytometry, and multiplex imaging applications. Antibody use should be optimized by the end user for each application and assay.

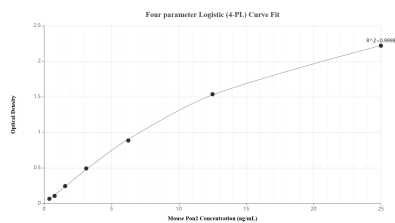
## Storage

**Storage:**  
Store at -80°C.  
**Storage Buffer:**  
PBS only, pH7.3

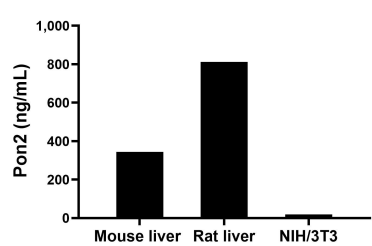
For technical support and original validation data for this product please contact:  
T: 1 (888) 4PTGLAB (1-888-478-4522) (toll free in USA), or 1(312) 455-8498 (outside USA)  
E: proteintech@ptglab.com  
W: ptglab.com

This product is exclusively available under Proteintech Group brand and is not available to purchase from any other manufacturer.

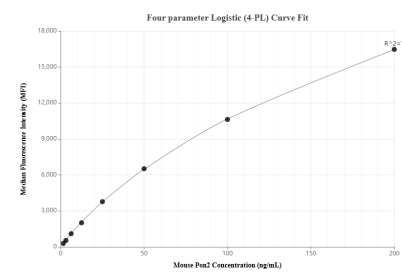
## Selected Validation Data



Sandwich ELISA standard curve of MP01843-1, Mouse Pon2 Recombinant Matched Antibody Pair - PBS only. 85126-4-PBS was coated to a plate as the capture antibody and incubated with serial dilutions of standard Eg2741. 85126-2-PBS was HRP conjugated as the detection antibody. Range: 0.391-25 ng/mL.



The mean Pon2 concentration was determined to be 344.03 ng/mL in mouse liver tissue extract based on a 3.70 mg/mL extract load, 812.45 ng/mL in rat liver tissue extract based on a 2.60 mg/mL extract load and 19.36 ng/mL in NIH/3T3 cell extract based on a 1.50 mg/mL extract load.



Cytometric bead array standard curve of MP01843-1, MOUSE Pon2 Recombinant Matched Antibody Pair, PBS Only. Capture antibody: 85126-4-PBS. Detection antibody: 85126-2-PBS. Standard: Eg2741. Range: 1.563-200 ng/mL.