

For Research Use Only

Mouse PON2 Recombinant antibody, PBS Only (Capture)

Catalog Number: 85126-4-PBS



Basic Information

Catalog Number: 85126-4-PBS	GenBank Accession Number: NM_183308.2	Purification Method: Protein A purification
Size: 100ug , Concentration: 1 mg/ml by Nanodrop;	GeneID (NCBI): 330260	CloneNo.: 242673H1
Source: Rabbit	UNIPROT ID: Q62086	
Isotype: IgG	Full Name: paraoxonase 2	
	Calculated MW: 40 kDa	
	Observed MW: 39 kDa	

Applications

Tested Applications:
WB, Cytometric bead array, Sandwich ELISA, Indirect ELISA, Sample test

Species Specificity:
mouse, rat

Product Information

85126-4-PBS targets PON2 as part of a matched antibody pair:

MP01843-1: 85126-4-PBS capture and 85126-2-PBS detection (validated in Cytometric bead array, Sandwich ELISA)

Unconjugated rabbit recombinant monoclonal antibody in PBS only (BSA and azide free) storage buffer at a concentration of 1 mg/mL, ready for conjugation. Created using Proteintech's proprietary in-house recombinant technology. Recombinant production enables unrivalled batch-to-batch consistency, easy scale-up, and future security of supply.

This conjugation ready format makes antibodies ideal for use in many applications including: ELISAs, multiplex assays requiring matched pairs, mass cytometry, and multiplex imaging applications. Antibody use should be optimized by the end user for each application and assay.

Background Information

PON2 (Serum paraoxonase/arylesterase 2) has antioxidant activity and can prevent LDL lipid peroxidation, reverses the oxidation of mildly oxidized LDL, and inhibits the ability of MM-LDL to induce monocyte chemotaxis. Highest levels of PON2 protein are found in the mouse lung and small intestine, followed by the heart and liver, while lower levels are present in the testis, kidney and brain. PON2 expression in tissues from female mice is always significantly higher than in male animals. There are also some reports showing two bands of 43 kDa and 53 kDa to be detected through western blot as the two isoforms of this protein. (PMID:21354197).

Storage

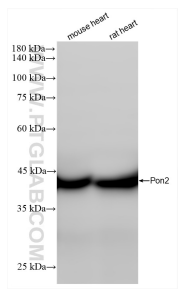
Storage:
Store at -80°C.

Storage Buffer:
PBS only, pH7.3

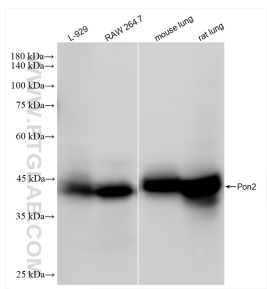
For technical support and original validation data for this product please contact:
T: 1 (888) 4PTGLAB (1-888-478-4522) (toll free in USA), or 1(312) 455-8498 (outside USA)
E: proteintech@ptglab.com
W: ptglab.com

This product is exclusively available under Proteintech Group brand and is not available to purchase from any other manufacturer.

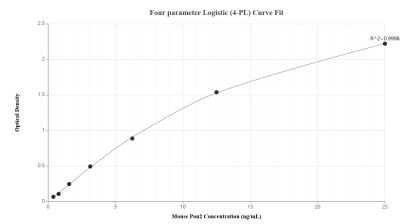
Selected Validation Data



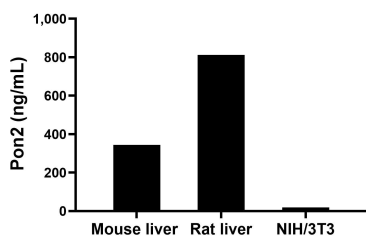
Various lysates were subjected to SDS PAGE followed by western blot with 85126-4-RR (Pon2 antibody) at dilution of 1:5000 incubated at room temperature for 1.5 hours. This data was developed using the same antibody clone with 85126-4-PBS in a different storage buffer formulation.



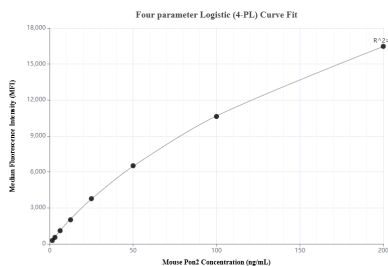
Various lysates were subjected to SDS PAGE followed by western blot with 85126-4-RR (Pon2 antibody) at dilution of 1:5000 incubated at room temperature for 1.5 hours. This data was developed using the same antibody clone with 85126-4-PBS in a different storage buffer formulation.



Sandwich ELISA standard curve of MP01843-1, Mouse Pon2 Recombinant Matched Antibody Pair - PBS only. 85126-4-PBS was coated to a plate as the capture antibody and incubated with serial dilutions of standard Eg2741. 85126-2-PBS was HRP conjugated as the detection antibody. Range: 0.391-25 ng/mL



The mean Pon2 concentration was determined to be 344.03 ng/mL in mouse liver tissue extract based on a 3.70 mg/mL extract load, 812.45 ng/mL in rat liver tissue extract based on a 2.60 mg/mL extract load and 19.36 ng/mL in NIH/3T3 cell extract based on a 1.50 mg/mL extract load.



Cytometric bead array standard curve of MP01843-1, MOUSE Pon2 Recombinant Matched Antibody Pair, PBS Only. Capture antibody: 85126-4-PBS. Detection antibody: 85126-2-PBS. Standard: Eg2741. Range: 1.563-200 ng/mL