

For Research Use Only

Mouse CD36/SR-B3 Recombinant antibody, PBS Only (Capture/Detector)

Catalog Number: 85127-2-PBS



Basic Information

Catalog Number: 85127-2-PBS	GenBank Accession Number: NM_007643.4	Purification Method: Protein A purification
Size: 100ug , Concentration: 1 mg/ml by Nanodrop;	GeneID (NCBI): 12491	CloneNo.: 242662C3
Source: Rabbit	UNIPROT ID: Q08857	
Isotype: IgG	Full Name: CD36 antigen	
	Calculated MW: 53 kDa	

Applications

Tested Applications:
Cytometric bead array, Sandwich ELISA, Indirect ELISA, Sample test

Species Specificity:
mouse

Product Information

85127-2-PBS targets CD36/SR-B3 as part of a matched antibody pair:

MP01829-1: 85127-2-PBS capture and 85127-1-PBS detection (validated in Cytometric bead array)

MP01829-2: 85127-2-PBS capture and 85127-3-PBS detection (validated in Cytometric bead array)

MP01829-3: 85127-4-PBS capture and 85127-2-PBS detection (validated in Sandwich ELISA)

Unconjugated rabbit recombinant monoclonal antibody in PBS only (BSA and azide free) storage buffer at a concentration of 1 mg/mL, ready for conjugation. Created using Proteintech's proprietary in-house recombinant technology. Recombinant production enables unrivalled batch-to-batch consistency, easy scale-up, and future security of supply.

This conjugation ready format makes antibodies ideal for use in many applications including: ELISAs, multiplex assays requiring matched pairs, mass cytometry, and multiplex imaging applications. Antibody use should be optimized by the end user for each application and assay.

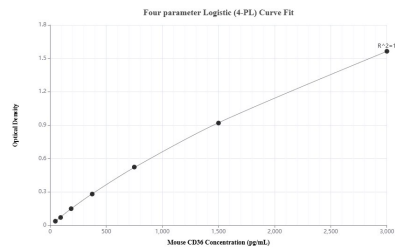
Storage

Storage:
Store at -80°C.
Storage Buffer:
PBS Only

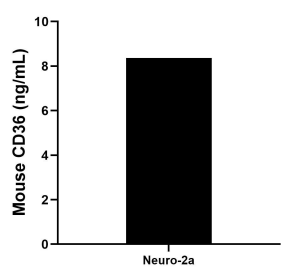
For technical support and original validation data for this product please contact:
T: 1 (888) 4PTGLAB (1-888-478-4522) (toll free in USA), or 1(312) 455-8498 (outside USA)
E: proteintech@ptglab.com
W: ptglab.com

This product is exclusively available under Proteintech Group brand and is not available to purchase from any other manufacturer.

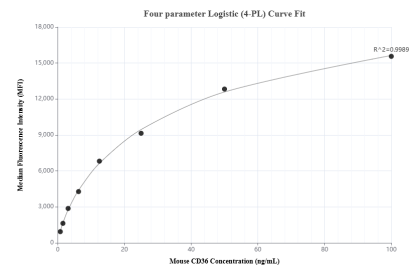
Selected Validation Data



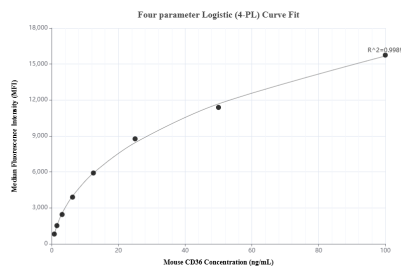
Sandwich ELISA standard curve of MP01829-3, Mouse CD36 Recombinant Matched Antibody Pair - PBS only. 85127-4-PBS was coated to a plate as the capture antibody and incubated with serial dilutions of standard Eg3464. 85127-2-PBS was HRP conjugated as the detection antibody. Range: 46.9-3000 pg/mL



The mean CD36 concentration was determined to be 8.36 ng/mL in Neuro-3a cell extract based on a 1.5 mg/mL extract load.



Cytometric bead array standard curve of MP01829-2, MOUSE CD36 Recombinant Matched Antibody Pair, PBS Only. Capture antibody: 85127-2-PBS. Detection antibody: 85127-3-PBS. Standard: Eg3464. Range: 0.781-100 ng/mL



Cytometric bead array standard curve of MP01829-1, MOUSE CD36 Recombinant Matched Antibody Pair, PBS Only. Capture antibody: 85127-2-PBS. Detection antibody: 85127-1-PBS. Standard: Eg3464. Range: 0.781-100 ng/mL