

For Research Use Only

Mouse Foxp3 Recombinant antibody, PBS Only (Capture)

Catalog Number: 85128-1-PBS



Basic Information

Catalog Number:

85128-1-PBS

Size:

100ug, Concentration: 1 mg/ml by
Nanodrop;

Source:

Rabbit

Isotype:

IgG

GenBank Accession Number:

GeneID (NCBI):

20371

Full Name:

forkhead box P3

Purification Method:

Protein A purification

CloneNo.:

242674B3

Applications

Tested Applications:

Cytometric bead array, Sandwich ELISA, Indirect ELISA,
Sample test

Species Specificity:

mouse

Product Information

85128-1-PBS targets Foxp3 as part of a matched antibody pair:

MP01845-2: 85128-1-PBS capture and 85128-2-PBS detection (validated in Cytometric bead array, Sandwich ELISA)

Unconjugated rabbit recombinant monoclonal antibody in PBS only (BSA and azide free) storage buffer at a concentration of 1 mg/mL, ready for conjugation. Created using Proteintech's proprietary in-house recombinant technology. Recombinant production enables unrivalled batch-to-batch consistency, easy scale-up, and future security of supply.

This conjugation ready format makes antibodies ideal for use in many applications including: ELISAs, multiplex assays requiring matched pairs, mass cytometry, and multiplex imaging applications. Antibody use should be optimized by the end user for each application and assay.

Storage

Storage:

Store at -80°C.

Storage Buffer:

PBS Only

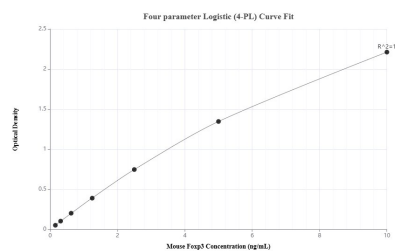
For technical support and original validation data for this product please contact:

T: 1 (888) 4PTGLAB (1-888-478-4522) (toll free
in USA), or 1(312) 455-8498 (outside USA)

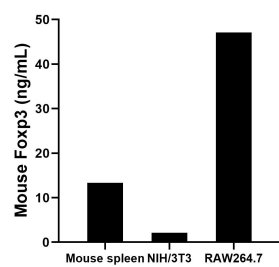
E: proteintech@ptglab.com
W: ptglab.com

This product is exclusively available under Proteintech Group brand and is not available to purchase from any other manufacturer.

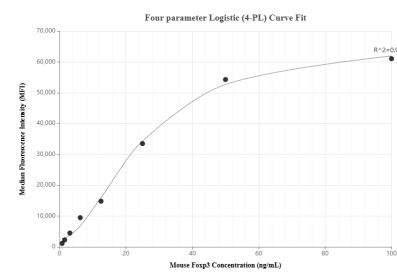
Selected Validation Data



Sandwich ELISA standard curve of MP01845-2, Mouse Fcγ3 Recombinant Matched Antibody Pair - PBS only. 85128-1-PBS was coated to a plate as the capture antibody and incubated with serial dilutions of standard Eg4361. 85128-2-PBS was HRP conjugated as the detection antibody. Range: 0.156-10 ng/mL



The mean Fcγ3 concentration was determined to be 13.33 ng/mL in mouse spleen tissue extract based on a 8.4 mg/mL extract load, 2.13 ng/mL in NIH/3T3 cell extract based on a 1.5 mg/mL extract load, and 47.11 ng/mL in RAW264.7 cell extract based on a 1.3 mg/mL extract load.



Cytometric bead array standard curve of MP01845-2, MOUSE Fcγ3 Recombinant Matched Antibody Pair, PBS Only. Capture antibody: 85128-1-PBS. Detection antibody: 85128-2-PBS. Standard: Eg4360. Range: 0.781-100 ng/mL