

For Research Use Only

TCL1A Recombinant antibody, PBS Only

Catalog Number: 85129-5-PBS



Basic Information

Catalog Number:

85129-5-PBS

Size:

100ug , Concentration: 1 mg/ml by Nanodrop;

Source:

Rabbit

Isotype:

IgG

Immunogen Catalog Number:

AG0786

GenBank Accession Number:

BC005831

GeneID (NCBI):

8115

UNIPROT ID:

P56279

Full Name:

T-cell leukemia/lymphoma 1A

Calculated MW:

13 kDa

Observed MW:

15 kDa

Purification Method:

Protein A purification

CloneNo.:

242623A9

Applications

Tested Applications:

WB, IF/ICC, Indirect ELISA

Species Specificity:

human

Background Information

TCL1A, also named as TCL1 and p14 TCL1, enhances cell proliferation, stabilizes mitochondrial membrane potential and promotes cell survival. TCL1A immunodetection is an independent marker of adverse outcome that could be used in routine settings for the management of DLCL patients. TCL1A expression is correlated with shorter time to treatment in chronic lymphocytic leukemia cases and shorter lymphoma-specific survival in mantle cell lymphoma series. It is a potential therapeutic target.

Storage

Storage:

Store at -80°C.

Storage Buffer:

PBS Only

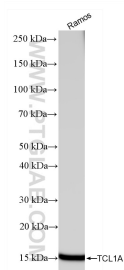
For technical support and original validation data for this product please contact:

T: 1 (888) 4PTGLAB (1-888-478-4522) (toll free in USA), or 1(312) 455-8498 (outside USA)

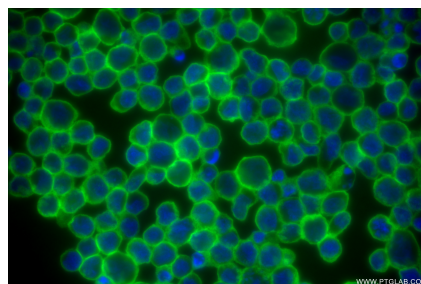
E: proteintech@ptglab.com
W: ptglab.com

This product is exclusively available under Proteintech Group brand and is not available to purchase from any other manufacturer.

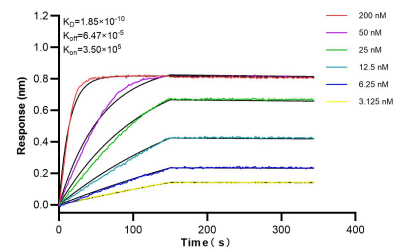
Selected Validation Data



Ramos cells were subjected to SDS PAGE followed by western blot with 85129-5-RR (TCL1A antibody) at dilution of 1:5000 incubated at room temperature for 1.5 hours. This data was developed using the same antibody clone with 85129-5-PBS in a different storage buffer formulation.



Immunofluorescent analysis of (4% PFA) fixed Ramos cells using TCL1A antibody (85129-5-RR, Clone: 242623A9) at dilution of 1:200 and CoraLite® 488-Conjugated Goat Anti-Rabbit IgG(H+L) (SA00013-2). This data was developed using the same antibody clone with 85129-5-PBS in a different storage buffer formulation.



Biolayer interferometry (BLI) kinetic assays of 85129-5-RR against Human TCL1A were performed. The affinity constant is 0.185 nM.