

For Research Use Only

# STARD7 Recombinant antibody, PBS Only

Catalog Number: 85131-4-PBS



## Basic Information

<b>Catalog Number:</b> 85131-4-PBS	<b>GenBank Accession Number:</b> BC008894	<b>Purification Method:</b> Protein A purification
<b>Size:</b> 100ug, Concentration: 1 mg/ml by Nanodrop;	<b>GeneID (NCBI):</b> 56910	<b>CloneNo.:</b> 242760A3
<b>Source:</b> Rabbit	<b>UNIPROT ID:</b> Q9NQZ5	
<b>Isotype:</b> IgG	<b>Full Name:</b> StAR-related lipid transfer (START) domain containing 7	
<b>Immunogen Catalog Number:</b> AG8224	<b>Calculated MW:</b> 295 aa, 35 kDa	
	<b>Observed MW:</b> 34 kDa	

## Applications

**Tested Applications:**  
WB, Indirect ELISA

**Species Specificity:**  
human

## Background Information

STARD7, also known as gestational trophoblastic tumor gene-1 (GTT1), is a lipid transfer protein that specifically binds and transports phosphatidylcholine (PC) between cellular membranes. It is a member of the START (Steroidogenic Acute Regulatory protein-related lipid transfer) domain-containing protein family, which is involved in intracellular lipid transport and metabolism. (PMID: 23507753)

## Storage

**Storage:**  
Store at -80°C.

**Storage Buffer:**  
PBS Only

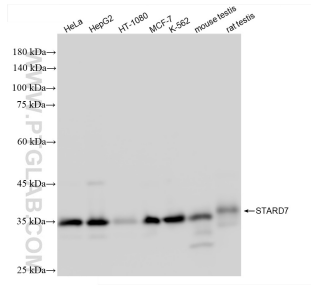
For technical support and original validation data for this product please contact:

T: 1 (888) 4PTGLAB (1-888-478-4522) (toll free in USA), or 1(312) 455-8498 (outside USA)

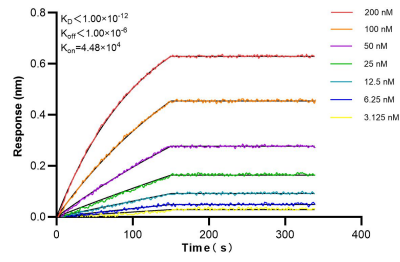
E: [proteintech@ptglab.com](mailto:proteintech@ptglab.com)  
W: [ptglab.com](http://ptglab.com)

This product is exclusively available under Proteintech Group brand and is not available to purchase from any other manufacturer.

## Selected Validation Data



Various lysates were subjected to SDS PAGE followed by western blot with 85131-4-RR (STARD7 antibody) at dilution of 1:10000 incubated at room temperature for 1.5 hours. This data was developed using the same antibody clone with 85131-4-PBS in a different storage buffer formulation.



Biolayer interferometry (BLI) kinetic assays of 85131-4-RR against Human STARD7 were performed. The affinity constant is below 1 pM.