

# Complement factor H Recombinant antibody, PBS Only (Capture)

Catalog Number: 85132-2-PBS

## Basic Information

<b>Catalog Number:</b> 85132-2-PBS	<b>GenBank Accession Number:</b> GeneID (NCBI): 3075	<b>Purification Method:</b> Protein A purification
<b>Size:</b> 100ug , Concentration: 1 mg/ml by Nanodrop;	<b>UNIPROT ID:</b> P08603-1	<b>CloneNo.:</b> 242740E8
<b>Source:</b> Rabbit	<b>Full Name:</b> complement factor H	
<b>Isotype:</b> IgG	<b>Calculated MW:</b> 139kDa	
<b>Immunogen Catalog Number:</b> EG3753	<b>Observed MW:</b> 140-150 kDa	

## Applications

**Tested Applications:**  
WB, Cytometric bead array, Indirect ELISA

**Species Specificity:**  
human

## Product Information

85132-2-PBS targets Complement factor H as part of a matched antibody pair:

MP01827-1: 85132-2-PBS capture and 85132-3-PBS detection (validated in Cytometric bead array)

Unconjugated rabbit recombinant monoclonal antibody in PBS only (BSA and azide free) storage buffer at a concentration of 1 mg/mL, ready for conjugation. Created using Proteintech's proprietary in-house recombinant technology. Recombinant production enables unrivalled batch-to-batch consistency, easy scale-up, and future security of supply.

This conjugation ready format makes antibodies ideal for use in many applications including: ELISAs, multiplex assays requiring matched pairs, mass cytometry, and multiplex imaging applications. Antibody use should be optimized by the end user for each application and assay.

## Background Information

Complement factor H (CFH) is an abundant plasma glycoprotein that regulates the function of the alternative complement pathway in the fluid phase and on cellular surfaces (PMID: 2963625). Factor H binds to C3b, accelerates the decay of the alternative pathway C3-convertase (C3bBb), and acts as a cofactor for the factor I-mediated proteolytic inactivation of C3b (PMID: 15163532). It plays a critical role in the homeostasis of the complement system in plasma and in the protection of bystander host cells and tissues from damage by complement activation. Abnormalities in factor H have been associated with renal disease (PMID: 18190458).

## Storage

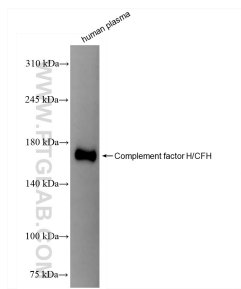
**Storage:**  
Store at -80°C.

**Storage Buffer:**  
PBS only, pH7.3

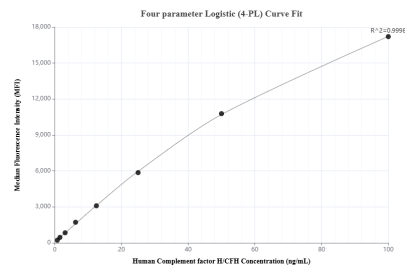
For technical support and original validation data for this product please contact:  
T: 1 (888) 4PTGLAB (1-888-478-4522) (toll free in USA), or 1(312) 455-8498 (outside USA)  
E: [proteintech@ptglab.com](mailto:proteintech@ptglab.com)  
W: [ptglab.com](http://ptglab.com)

This product is exclusively available under Proteintech Group brand and is not available to purchase from any other manufacturer.

## Selected Validation Data



human plasma were subjected to SDS PAGE followed by western blot with 85132-2-RR (Complement factor H/CFH antibody) at dilution of 1:10000 incubated at room temperature for 1.5 hours. This data was developed using the same antibody clone with 85132-2-PBS in a different storage buffer formulation.



Cytometric bead array standard curve of MP01827-1, Complement factor H/CFH Recombinant Matched Antibody Pair, PBS Only. Capture antibody: 85132-2-PBS. Detection antibody: 85132-3-PBS. Standard: Eg3753. Range: 0.781-100 ng/mL.