

For Research Use Only

Complement factor H Recombinant antibody

Catalog Number: 85132-2-RR



Basic Information

Catalog Number: 85132-2-RR	GenBank Accession Number: GeneID (NCBI): 3075	Purification Method: Protein A purification
Size: 100ul , Concentration: 1000 µg/ml by Nanodrop;	UNIPROT ID: P08603-1	CloneNo.: 242740E8
Source: Rabbit	Full Name: complement factor H	Recommended Dilutions: WB 1:5000-1:50000
Isotype: IgG	Calculated MW: 139kDa	
Immunogen Catalog Number: EG3753	Observed MW: 140-150 kDa	

Applications

Tested Applications: WB, ELISA	Positive Controls: WB : human plasma,
Species Specificity: human	

Background Information

Complement factor H (CFH) is an abundant plasma glycoprotein that regulates the function of the alternative complement pathway in the fluid phase and on cellular surfaces (PMID: 2963625). Factor H binds to C3b, accelerates the decay of the alternative pathway C3-convertase (C3bBb), and acts as a cofactor for the factor I-mediated proteolytic inactivation of C3b (PMID: 15163532). It plays a critical role in the homeostasis of the complement system in plasma and in the protection of bystander host cells and tissues from damage by complement activation. Abnormalities in factor H have been associated with renal disease (PMID: 18190458).

Storage

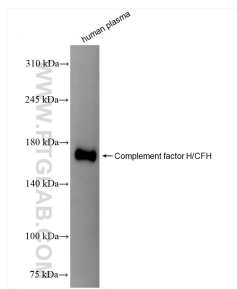
Storage:
Store at -20°C. Stable for one year after shipment.
Storage Buffer:
PBS with 0.02% sodium azide and 50% glycerol, pH7.3
Aliquoting is unnecessary for -20°C storage

*** 20ul sizes contain 0.1% BSA

For technical support and original validation data for this product please contact:
T: 1 (888) 4PTGLAB (1-888-478-4522) (toll free in USA), or 1(312) 455-8498 (outside USA)
E: proteintech@ptglab.com
W: ptglab.com

This product is exclusively available under Proteintech Group brand and is not available to purchase from any other manufacturer.

Selected Validation Data



human plasma were subjected to SDS PAGE followed by western blot with 85132-2-RR (Complement factor H/CFH antibody) at dilution of 1:10000 incubated at room temperature for 1.5 hours.