

For Research Use Only

Complement factor H/CFH Recombinant antibody, PBS Only (Detector)

Catalog Number: 85132-3-PBS



Basic Information

Catalog Number:

85132-3-PBS

Size:

100ug, Concentration: 1 mg/ml by Nanodrop;

Source:

Rabbit

Isotype:

IgG

GenBank Accession Number:

GeneID (NCBI):

3075

UNIPROT ID:

P08603-1

Full Name:

complement factor H

Calculated MW:

139kDa

Purification Method:

Protein A purification

CloneNo.:

242740G2

Applications

Tested Applications:

Cytometric bead array, Sandwich ELISA, Indirect ELISA, Sample test

Species Specificity:

human

Product Information

85132-3-PBS targets Complement factor H/CFH as part of a matched antibody pair:

MP01827-1: 85132-2-PBS capture and 85132-3-PBS detection (validated in Cytometric bead array)

MP01827-2: 85132-1-PBS capture and 85132-3-PBS detection (validated in Cytometric bead array, Sandwich ELISA)

Unconjugated rabbit recombinant monoclonal antibody in PBS only (BSA and azide free) storage buffer at a concentration of 1 mg/mL, ready for conjugation. Created using Proteintech's proprietary in-house recombinant technology. Recombinant production enables unrivalled batch-to-batch consistency, easy scale-up, and future security of supply.

This conjugation ready format makes antibodies ideal for use in many applications including: ELISAs, multiplex assays requiring matched pairs, mass cytometry, and multiplex imaging applications. Antibody use should be optimized by the end user for each application and assay.

Storage

Storage:

Store at -80°C.

Storage Buffer:

PBS Only

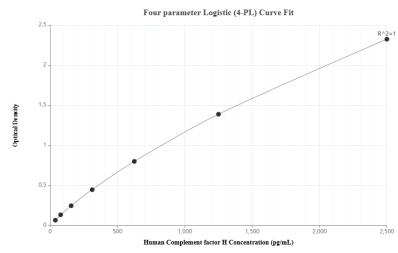
For technical support and original validation data for this product please contact:

T: 1 (888) 4PTGLAB (1-888-478-4522) (toll free in USA), or 1(312) 455-8498 (outside USA)

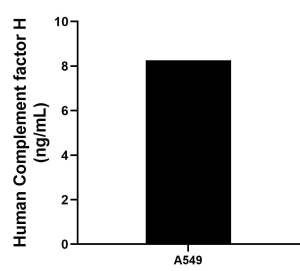
E: proteintech@ptglab.com
W: ptglab.com

This product is exclusively available under Proteintech Group brand and is not available to purchase from any other manufacturer.

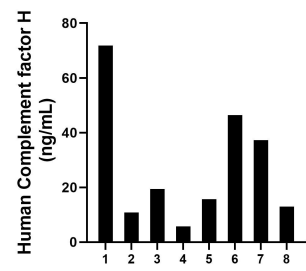
Selected Validation Data



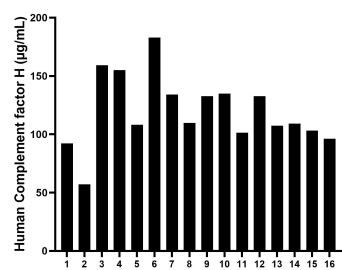
Sandwich ELISA standard curve of MP01827-2, Humanc Complement factor H Recombinant Matched Antibody Pair - PBS only. 85132-1-PBS was coated to a plate as the capture antibody and incubated with serial dilutions of standard Eg3753. 85132-3-PBS was HRP conjugated as the detection antibody. Range: 39.1-2500 pg/mL



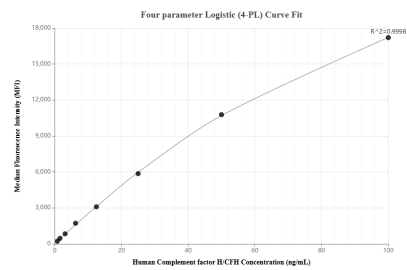
A549 human lung carcinoma cells were cultured in RPMI-1640 supplemented with 10% fetal bovine serum, 100 U/mL penicillin and 100 µg/mL streptomycin sulfate. An aliquot of the culture supernates were removed, assayed for human Complement factor H, and measured 8.26 ng/mL



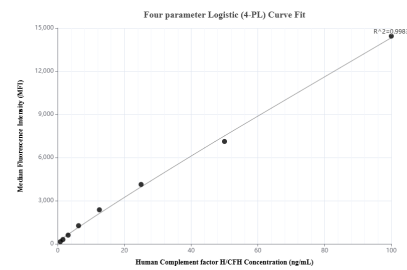
Saliva of eight individual healthy human donors was measured. The human Complement factor H concentration of detected samples was determined to be 27.52 ng/mL with a range of 5.71-71.78 ng/mL



Serum of sixteen individual healthy human donors was measured. The human Complement factor H concentration of detected samples was determined to be 119.76 µg/mL with a range of 57.20 - 159.28 µg/mL



Cytometric bead array standard curve of MP01827-1, Complement factor H/ CFH Recombinant Matched Antibody Pair, PBS Only. Capture antibody: 85132-2-PBS. Detection antibody: 85132-3-PBS. Standard: Eg3753. Range: 0.781-100 ng/mL



Cytometric bead array standard curve of MP01827-2, Complement factor H/CFH Recombinant Matched Antibody Pair, PBS Only. Capture antibody: 85132-1-PBS. Detection antibody: 85132-3-PBS. Standard: Eg3753. Range: 0.781-100 ng/mL