

For Research Use Only

TINAGL1 Recombinant antibody

Catalog Number: 85140-2-RR



Basic Information

Catalog Number: 85140-2-RR	GenBank Accession Number: BC009048	Purification Method: Protein A purification
Size: 100ul , Concentration: 1000 µg/ml by Nanodrop;	GeneID (NCBI): 64129	CloneNo.: 242813F10
Source: Rabbit	UNIPROT ID: Q9GZM7	Recommended Dilutions: WB 1:1000-1:4000
Isotype: IgG	Full Name: tubulointerstitial nephritis antigen-like 1	
Immunogen Catalog Number: AG2721	Calculated MW: 467 aa, 52 kDa	
	Observed MW: 52 kDa	

Applications

Tested Applications: WB, ELISA	Positive Controls: WB : human placenta tissue,
Species Specificity: human	

Background Information

Tubulointerstitial nephritis antigen-like 1 (Tinagl1), a secreted extracellular protein, was initially identified as a putative component of the ECM. Tinagl1 is most commonly associated with embryonic development, including the heart and adrenal glands. Low levels of Tinagl1 expression can be dire for craniofacial development and for female fertility.

Storage

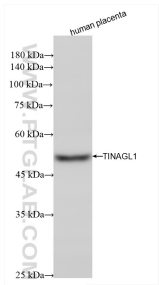
Storage:
Store at -20°C. Stable for one year after shipment.
Storage Buffer:
PBS with 0.02% sodium azide and 50% glycerol pH 7.3.
Aliquoting is unnecessary for -20°C storage

*** 20ul sizes contain 0.1% BSA

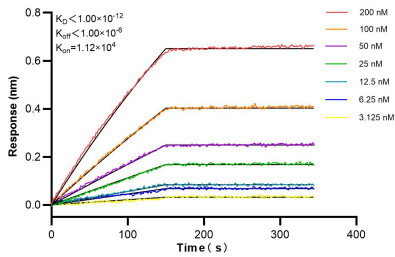
For technical support and original validation data for this product please contact:
T: 1 (888) 4PTGLAB (1-888-478-4522) (toll free in USA), or 1(312) 455-8498 (outside USA)
E: proteintech@ptglab.com
W: ptglab.com

This product is exclusively available under Proteintech Group brand and is not available to purchase from any other manufacturer.

Selected Validation Data



Various lysates were subjected to SDS PAGE followed by western blot with 85140-2-RR (TINAGL1 antibody) at dilution of 1:2000 incubated at room temperature for 1.5 hours.



Biolayer interferometry (BLI) kinetic assays of 85140-2-RR against Human TINAGL1 were performed. The affinity constant is below 1 pM.