

For Research Use Only

GBE1 Recombinant antibody, PBS Only

Catalog Number: 85143-5-PBS



Basic Information

Catalog Number:

85143-5-PBS

Size:

100ug, Concentration: 1 mg/ml by Nanodrop;

Source:

Rabbit

Isotype:

IgG

Immunogen Catalog Number:

AG14154

GenBank Accession Number:

BC012098

GeneID (NCBI):

2632

UNIPROT ID:

Q04446

Full Name:

glucan (1,4-alpha-), branching enzyme 1

Calculated MW:

702 aa, 80 kDa

Observed MW:

72 kDa

Purification Method:

Protein A purification

CloneNo.:

242705G3

Applications

Tested Applications:

WB, Indirect ELISA

Species Specificity:

human, mouse, rat

Background Information

GBE1 (glucan (1,4-alpha-), branching enzyme 1) is essential for the globular and branched structure of glycogen, increasing solubility by creating a hydrophilic surface and reducing intracellular osmotic pressure. It may serve as a potential therapeutic target for treating LUAD (PMID: 31221150). The full sequence can be further processed into a mature form of 75 kDa.

Storage

Storage:

Store at -80°C.

Storage Buffer:

PBS only, pH7.3

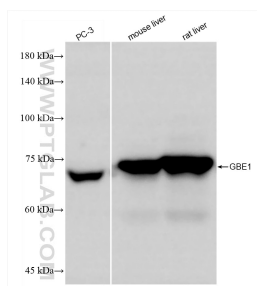
For technical support and original validation data for this product please contact:

T: 1 (888) 4PTGLAB (1-888-478-4522) (toll free in USA), or 1(312) 455-8498 (outside USA)

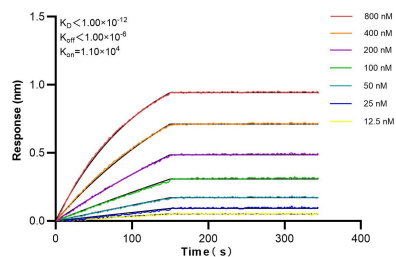
E: proteintech@ptglab.com
W: ptglab.com

This product is exclusively available under Proteintech Group brand and is not available to purchase from any other manufacturer.

Selected Validation Data



Various lysates were subjected to SDS PAGE followed by western blot with 85143-5-RR (GBE1 antibody) at dilution of 1:10000 incubated at room temperature for 1.5 hours. This data was developed using the same antibody clone with 85143-5-PBS in a different storage buffer formulation.



Biolayer interferometry (BLI) kinetic assays of 85143-5-RR against Human GBE1 were performed. The affinity constant is below 1 pM.