

For Research Use Only

GBE1 Recombinant antibody

Catalog Number: 85143-5-RR



Basic Information

Catalog Number: 85143-5-RR	GenBank Accession Number: BC012098	Purification Method: Protein A purification
Size: 100ul , Concentration: 1000 µg/ml by Nanodrop;	GeneID (NCBI): 2632	CloneNo.: 242705G3
Source: Rabbit	UNIPROT ID: Q04446	Recommended Dilutions: WB 1:5000-1:50000
Isotype: IgG	Full Name: glucan (1,4-alpha-), branching enzyme 1	
Immunogen Catalog Number: AG14154	Calculated MW: 702 aa, 80 kDa	
	Observed MW: 72 kDa	

Applications

Tested Applications: WB, ELISA	Positive Controls:
Species Specificity: human, mouse, rat	WB : PC-3 cells, mouse lung tissue, rat lung tissue, mouse liver tissue, rat liver tissue

Background Information

GBE1 (glucan (1,4-alpha-), branching enzyme 1) is essential for the globular and branched structure of glycogen, increasing solubility by creating a hydrophilic surface and reducing intracellular osmotic pressure. It may serve as a potential therapeutic target for treating LUAD(PMID: 31221150). The full sequence can be further processed into a mature form of 75 kDa.

Storage

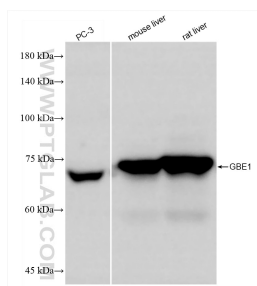
Storage:
Store at -20°C. Stable for one year after shipment.
Storage Buffer:
PBS with 0.02% sodium azide and 50% glycerol, pH7.3
Aliquoting is unnecessary for -20°C storage

*** 20ul sizes contain 0.1% BSA

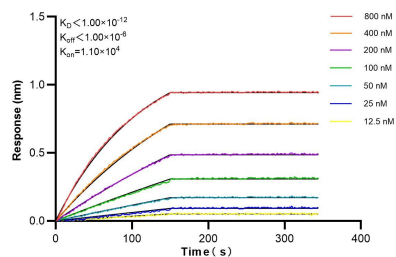
For technical support and original validation data for this product please contact:
T: 1 (888) 4PTGLAB (1-888-478-4522) (toll free in USA), or 1(312) 455-8498 (outside USA)
E: proteintech@ptglab.com
W: ptglab.com

This product is exclusively available under Proteintech Group brand and is not available to purchase from any other manufacturer.

Selected Validation Data



Various lysates were subjected to SDS PAGE followed by western blot with 85143-5-RR (GBE1 antibody) at dilution of 1:10000 incubated at room temperature for 1.5 hours.



Biolayer interferometry (BLI) kinetic assays of 85143-5-RR against Human GBE1 were performed. The affinity constant is below 1 pM.