

For Research Use Only

SLC16A7 Recombinant antibody, PBS Only (Capture)

Catalog Number: 85145-1-PBS



Basic Information

Catalog Number: 85145-1-PBS	GenBank Accession Number: BC030693	Purification Method: Protein A purification
Size: 100ug , Concentration: 1 mg/ml by Nanodrop;	GeneID (NCBI): 9194	CloneNo.: 242811E4
Source: Rabbit	UNIPROT ID: O60669	
Isotype: IgG	Full Name: solute carrier family 16, member 7 (monocarboxylic acid transporter 2)	
Immunogen Catalog Number: AG14201	Calculated MW: 478 aa, 52 kDa	

Applications

Tested Applications:
Cytometric bead array, Sandwich ELISA, Indirect ELISA, Sample test

Species Specificity:
human

Product Information

85145-1-PBS targets SLC16A7 as part of a matched antibody pair:

MP01851-1: 85145-1-PBS capture and 85145-2-PBS detection (validated in Cytometric bead array, Sandwich ELISA)

Unconjugated rabbit recombinant monoclonal antibody in PBS only (BSA and azide free) storage buffer at a concentration of 1 mg/mL, ready for conjugation. Created using Proteintech's proprietary in-house recombinant technology. Recombinant production enables unrivalled batch-to-batch consistency, easy scale-up, and future security of supply.

This conjugation ready format makes antibodies ideal for use in many applications including: ELISAs, multiplex assays requiring matched pairs, mass cytometry, and multiplex imaging applications. Antibody use should be optimized by the end user for each application and assay.

Storage

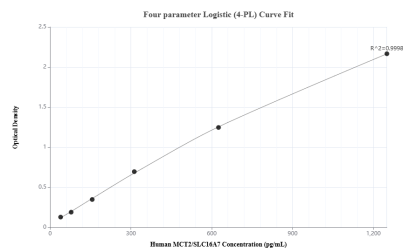
Storage:
Store at -80°C.

Storage Buffer:
PBS Only

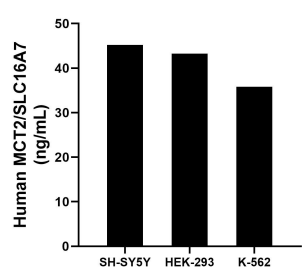
For technical support and original validation data for this product please contact:
T: 1 (888) 4PTGLAB (1-888-478-4522) (toll free in USA), or 1(312) 455-8498 (outside USA)
E: proteintech@ptglab.com
W: ptglab.com

This product is exclusively available under Proteintech Group brand and is not available to purchase from any other manufacturer.

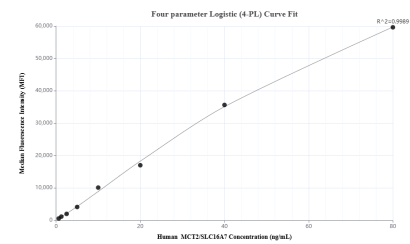
Selected Validation Data



Sandwich ELISA standard curve of MP01823-2, Humanc MCT2/SLC 16A7 Recombinant Matched Antibody Pair - PBS only. 85145-1-PBS was coated to a plate as the capture antibody and incubated with serial dilutions of standard Ag14201. 85145-2-PBS was HRP conjugated as the detection antibody. Range: 39.1-1250 pg/mL



The mean MCT2/SLC16A7 concentration was determined to be 45.22 ng/mL in SH-SY5Y cell extract based on a 3.2 mg/mL extract load, 43.27 ng/mL in HEK-293 cell extract based on a 2.7 mg/mL extract load and 35.80 ng/mL in K-562 cell extract based on a 2.5 mg/mL extract load.



Cytometric bead array standard curve of MP01851-1, MCT2/SLC 16A7 Recombinant Matched Antibody Pair, PBS Only. Capture antibody: 85145-1-PBS. Detection antibody: 85145-2-PBS. Standard: Ag14201. Range: 0.625-80 ng/mL