

For Research Use Only

MCT2/SLC16A7 Recombinant antibody

Catalog Number: 85145-3-RR



Basic Information

Catalog Number:

85145-3-RR

Size:

100ul, Concentration: 1000 µg/ml by Nanodrop;

Source:

Rabbit

Isotype:

IgG

Immunogen Catalog Number:

AG14201

GenBank Accession Number:

BC030693

GeneID (NCBI):

9194

UNIPROT ID:

O60669

Full Name:

solute carrier family 16, member 7 (monocarboxylic acid transporter 2)

Calculated MW:

478 aa, 52 kDa

Observed MW:

40-52 kDa

Purification Method:

Protein A purification

CloneNo.:

242811F6

Recommended Dilutions:

WB 1:1000-1:6000

Applications

Tested Applications:

WB, ELISA

Species Specificity:

human

Positive Controls:

WB : BxPC-3 cells, K-562 cells, SH-SY5Y cells

Background Information

SLC16A7, also named MCT2, is a proton-coupled monocarboxylate transporter catalyzing the rapid transport across the plasma membrane of many monocarboxylates. It has been reported that SLC16A7 is the primary monocarboxylate transporter in Purkinje cells and can be detected in the brain, cerebellum, liver, and kidney, but not in vascular smooth muscle cells, pericytes, endothelium, heart, lung, or stomach. There are some isoforms of SLC16A7 with bands around 52 kDa and 40-45 kDa in SDS-PAGE. The 80 kDa protein might be a dimer, similar to the papers published. (PMID: 9482213, 15749979, 11291733, 16901736)

Storage

Storage:

Store at -20°C. Stable for one year after shipment.

Storage Buffer:

PBS with 0.02% sodium azide and 50% glycerol, pH7.3

Aliquoting is unnecessary for -20°C storage

*** 20ul sizes contain 0.1% BSA

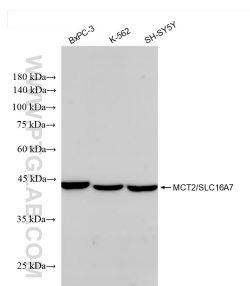
For technical support and original validation data for this product please contact:

T: 1 (888) 4PTGLAB (1-888-478-4522) (toll free in USA), or 1(312) 455-8498 (outside USA)

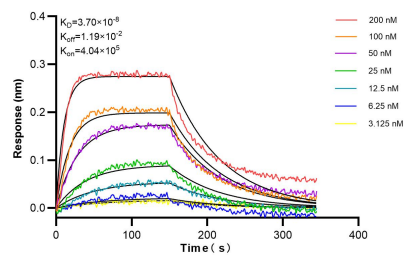
E: proteintech@ptglab.com
W: ptglab.com

This product is exclusively available under Proteintech Group brand and is not available to purchase from any other manufacturer.

Selected Validation Data



Various lysates were subjected to SDS PAGE followed by western blot with 85145-3-RR (SLC16A7 antibody) at dilution of 1:3000 incubated at room temperature for 1.5 hours.



Biolayer interferometry (BLI) kinetic assays of 85145-3-RR against Human MCT2/SLC16A7 were performed. The affinity constant is 37.0 nM.