

For Research Use Only

# RFC1 Recombinant antibody

Catalog Number: 85148-4-RR



## Basic Information

<b>Catalog Number:</b> 85148-4-RR	<b>GenBank Accession Number:</b> BC051751	<b>Purification Method:</b> Protein A purification
<b>Size:</b> 100ul , Concentration: 1000 µg/ml by Nanodrop;	<b>GeneID (NCBI):</b> 5981	<b>CloneNo.:</b> 242818H6
<b>Source:</b> Rabbit	<b>UNIPROT ID:</b> P35251	<b>Recommended Dilutions:</b> WB: 1:5000-1:50000 IHC: 1:750-1:3000 IF/ICC: 1:500-1:2000
<b>Isotype:</b> IgG	<b>Full Name:</b> replication factor C (activator 1) 1, 145kDa	
<b>Immunogen Catalog Number:</b> AG13585	<b>Calculated MW:</b> 128 kDa	
	<b>Observed MW:</b> 140 kDa	

## Applications

<b>Tested Applications:</b> WB, IHC, IF/ICC, ELISA	<b>Positive Controls:</b>
<b>Species Specificity:</b> human	<b>WB :</b> Jurkat cells, HEK-293T cells, A431 cells, HepG2 cells, HeLa cells
<b>Note-IHC: suggested antigen retrieval with TE buffer pH 9.0; (*) Alternatively, antigen retrieval may be performed with citrate buffer pH 6.0</b>	<b>IHC :</b> human colon tissue,
	<b>IF/ICC :</b> HeLa cells,

## Background Information

Replication factor C subunit 1 (RFC1) is a pentameric DNA polymerase accessory protein involved in DNA replication and repair (PMID: 10051561). It was reported as a cause of cerebellar ataxia with neuropathy and vestibular areflexia syndrome (CANVAS) (PMID: 30926972).

## Storage

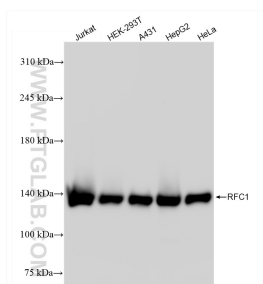
**Storage:**  
Store at -20°C. Stable for one year after shipment.  
**Storage Buffer:**  
PBS with 0.02% sodium azide and 50% glycerol, pH7.3  
**Aliquoting is unnecessary for -20°C storage**

\*\*\* 20ul sizes contain 0.1% BSA

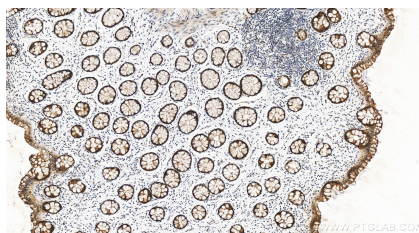
For technical support and original validation data for this product please contact:  
T: 1 (888) 4PTGLAB (1-888-478-4522) (toll free in USA), or 1(312) 455-8498 (outside USA)  
E: [proteintech@ptglab.com](mailto:proteintech@ptglab.com)  
W: [ptglab.com](http://ptglab.com)

This product is exclusively available under Proteintech Group brand and is not available to purchase from any other manufacturer.

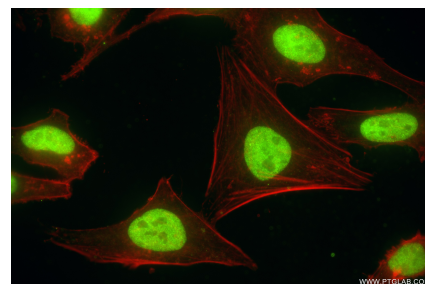
## Selected Validation Data



Various lysates were subjected to SDS PAGE followed by western blot with 85148-4-RR (RFC1 antibody) at dilution of 1:10000 incubated at room temperature for 1.5 hours.



Immunohistochemical analysis of paraffin-embedded human colon tissue slide using 85148-4-RR (RFC1 antibody) at dilution of 1:1500 (under 20x lens). Heat mediated antigen retrieval with Tris-EDTA buffer (pH 9.0).



Immunofluorescent analysis of (4% PFA) fixed HeLa cells using RFC1 antibody (85148-4-RR, Clone: 242818H6 ) at dilution of 1:1000 and CoraLite®488-Conjugated Goat Anti-Rabbit IgG(H+L) (SA00013-2), CL594-Phalloidin (red).