

For Research Use Only

TORC2 Recombinant antibody, PBS Only

Catalog Number: 85150-4-PBS



Basic Information

Catalog Number: 85150-4-PBS	GenBank Accession Number: BC053562	Purification Method: Protein A purification
Size: 100ug , Concentration: 1 mg/ml by Nanodrop;	GeneID (NCBI): 200186	CloneNo.: 242808B6
Source: Rabbit	UNIPROT ID: Q53ET0	
Isotype: IgG	Full Name: CREB regulated transcription coactivator 2	
Immunogen Catalog Number: AG3167	Calculated MW: 693 aa, 73 kDa	
	Observed MW: 80 kDa	

Applications

Tested Applications:
WB, FC (Intra), Indirect ELISA

Species Specificity:
human

Background Information

CRTC2, also named as TORC2, belongs to the TORC family. It is a transcriptional coactivator for CREB1 which activates transcription through both consensus and variant cAMP response element (CRE) sites. It acts as a coactivator, in the SIK/TORC signaling pathway, being active when dephosphorylated and acts independently of CREB1 'Ser-133' phosphorylation. CRTC2 enhances the interaction of CREB1 with TAF4. It regulates gluconeogenesis as a component of the LKB1/AMPK/TORC2 signaling pathway. CRTC2 regulates the expression of specific genes such as the steroidogenic gene, StAR. TORC2 was recently shown to be an important regulator of gluconeogenesis in the livers of mammals. It is one of the other key regulators of CRE-dependent MIE gene expression in NT2 cells. This regulation is linked to VIP-induced TORC2 dephosphorylation and translocation to the nucleus. (PMID: 19369332, 20504934).

Storage

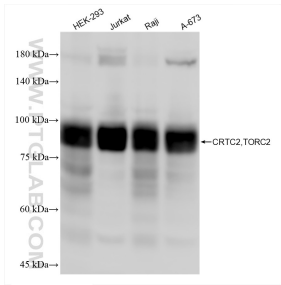
Storage:
Store at -80°C.

Storage Buffer:
PBS Only

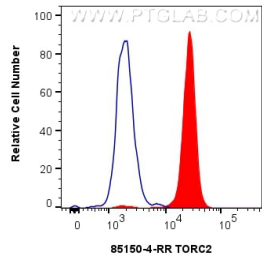
For technical support and original validation data for this product please contact:
T: 1 (888) 4PTGLAB (1-888-478-4522) (toll free in USA), or 1(312) 455-8498 (outside USA)
E: proteintech@ptglab.com
W: ptglab.com

This product is exclusively available under Proteintech Group brand and is not available to purchase from any other manufacturer.

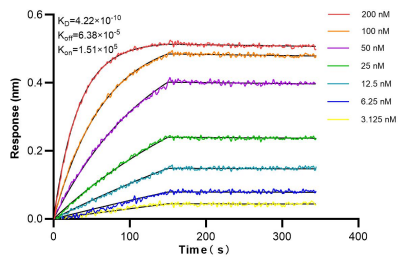
Selected Validation Data



Various lysates were subjected to SDS PAGE followed by western blot with 85150-4-RR (CRTC2,TORC2 antibody) at dilution of 1:10000 incubated at room temperature for 1.5 hours. This data was developed using the same antibody clone with 85150-4-PBS in a different storage buffer formulation.



1x10⁶ HeLa cells were intracellularly stained with 0.25 ug TORC2 Recombinant antibody (85150-4-RR, Clone:242808B6) and CoraLite®488-Conjugated Goat Anti-Rabbit IgG(H+L) (SA00013-2)(red), or 0.25 ug Rabbit IgG Isotype Control RecAb (98136-1-RR, Clone: 240953C9) (blue). Cells were fixed and permeabilized with Transcription Factor Staining Buffer Kit (PF00011). This data was developed using the same antibody clone with 85150-4-PBS in a different storage



Biolayer interferometry (BLI) kinetic assays of 85150-4-RR against Human TORC2 were performed. The affinity constant is 0.422 nM.