

For Research Use Only

# INPP4B Recombinant antibody, PBS Only (Detector)

Catalog Number: 85151-1-PBS



## Basic Information

<b>Catalog Number:</b> 85151-1-PBS	<b>GenBank Accession Number:</b> BC005273	<b>Purification Method:</b> Protein A purification
<b>Size:</b> 100ug , Concentration: 1 mg/ml by Nanodrop;	<b>GeneID (NCBI):</b> 8821	<b>CloneNo.:</b> 242837A4
<b>Source:</b> Rabbit	<b>UNIPROT ID:</b> O15327	
<b>Isotype:</b> IgG	<b>Full Name:</b> inositol polyphosphate-4-phosphatase, type II, 105kDa	
<b>Immunogen Catalog Number:</b> AG8676	<b>Calculated MW:</b> 53 aa, 6 kDa	

## Applications

**Tested Applications:**  
IF/ICC, FC (Intra), Cytometric bead array, Indirect ELISA

**Species Specificity:**  
human

## Product Information

85151-1-PBS targets INPP4B as part of a matched antibody pair:

MP01878-2: 85151-2-PBS capture and 85151-1-PBS detection (validated in Cytometric bead array)

Unconjugated rabbit recombinant monoclonal antibody in PBS only (BSA and azide free) storage buffer at a concentration of 1 mg/mL, ready for conjugation. Created using Proteintech's proprietary in-house recombinant technology. Recombinant production enables unrivalled batch-to-batch consistency, easy scale-up, and future security of supply.

This conjugation ready format makes antibodies ideal for use in many applications including: ELISAs, multiplex assays requiring matched pairs, mass cytometry, and multiplex imaging applications. Antibody use should be optimized by the end user for each application and assay.

## Background Information

INPP4B (Inositol polyphosphate 4-phosphatase type II) can catalyze the hydrolysis of the 4-position phosphate of phosphatidylinositol 3,4-bisphosphate, inositol 1,3,4-trisphosphate and inositol 3,4-trisphosphate (PMID: 24070612; 24591580). It also Plays a role in the late stages of macropinocytosis by dephosphorylating phosphatidylinositol 3,4-bisphosphate in membrane ruffles (PMID: 24591580).

## Storage

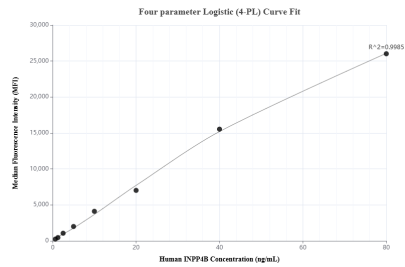
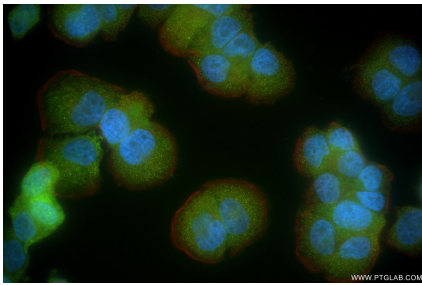
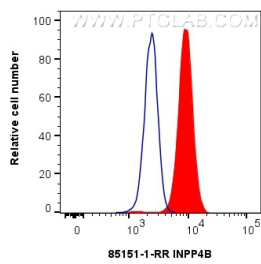
**Storage:**  
Store at -80°C.

**Storage Buffer:**  
PBS only

For technical support and original validation data for this product please contact:  
T: 1 (888) 4PTGLAB (1-888-478-4522) (toll free in USA), or 1(312) 455-8498 (outside USA)  
E: [proteintech@ptglab.com](mailto:proteintech@ptglab.com)  
W: [ptglab.com](http://ptglab.com)

This product is exclusively available under Proteintech Group brand and is not available to purchase from any other manufacturer.

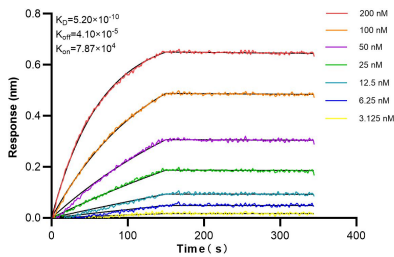
Selected Validation Data



1x10<sup>6</sup> K562 were intracellularly stained with 0.25 ug INPP4B Recombinant antibody (85151-1-RR, Clone:242837A4) and CoraLite®488-Conjugated Goat Anti-Rabbit IgG(H+L) (SA00013-2)(red), or 0.25 ug Rabbit IgG Isotype Control RecAb (98136-1-RR, Clone: 240953C9) (blue). Cells were fixed with 4% PFA and permeabilized with Flow Cytometry Perm Buffer (PF00011-C). This data was developed using the same antibody clone with 85151-1-PBS in a

Immunofluorescent analysis of (4% PFA) fixed T-47D cells using INPP4B antibody (85151-1-RR, Clone: 242837A4 ) at dilution of 1:400 and CoraLite®488-Conjugated Goat Anti-Rabbit IgG(H+L) (SA00013-2), CL594-Phalloidin (red). This data was developed using the same antibody clone with 85151-1-PBS in a different storage buffer formulation.

Cytometric bead array standard curve of MP01878-2, INPP4B Recombinant Matched Antibody Pair, PBS Only. Capture antibody: 85151-2-PBS. Detection antibody: 85151-1-PBS. Standard: Ag8676. Range: 0.625-80 ng/mL



Biolayer interferometry (BLI) kinetic assays of 85151-1-RR against Human INPP4B were performed. The affinity constant is 0.52 nM.