

For Research Use Only

INPP4B Recombinant antibody, PBS Only (Detector)

Catalog Number: 85151-4-PBS



Basic Information

Catalog Number: 85151-4-PBS	GenBank Accession Number: BC005273	Purification Method: Protein A purification
Size: 100ug , Concentration: 1 mg/ml by Nanodrop;	GeneID (NCBI): 8821	CloneNo.: 242837H2
Source: Rabbit	UNIPROT ID: O15327	
Isotype: IgG	Full Name: inositol polyphosphate-4-phosphatase, type II, 105kDa	
Immunogen Catalog Number: AG8676	Calculated MW: 53 aa, 6 kDa	
	Observed MW: 100-110 kDa	

Applications

Tested Applications:
WB, IF/ICC, FC (Intra), Cytometric bead array, Indirect ELISA

Species Specificity:
human

Product Information

85151-4-PBS targets INPP4B as part of a matched antibody pair.

MP01878-1: 85151-3-PBS capture and 85151-4-PBS detection (validated in Cytometric bead array)

Unconjugated rabbit recombinant monoclonal antibody in PBS only (BSA and azide free) storage buffer at a concentration of 1 mg/mL, ready for conjugation. Created using Proteintech's proprietary in-house recombinant technology. Recombinant production enables unrivalled batch-to-batch consistency, easy scale-up, and future security of supply.

This conjugation ready format makes antibodies ideal for use in many applications including: ELISAs, multiplex assays requiring matched pairs, mass cytometry, and multiplex imaging applications. Antibody use should be optimized by the end user for each application and assay.

Background Information

INPP4B (Inositol polyphosphate 4-phosphatase type II) can catalyze the hydrolysis of the 4-position phosphate of phosphatidylinositol 3,4-bisphosphate, inositol 1,3,4-trisphosphate and inositol 3,4-trisphosphate (PMID: 24070612; 24591580). It also Plays a role in the late stages of macropinocytosis by dephosphorylating phosphatidylinositol 3,4-bisphosphate in membrane ruffles (PMID: 24591580).

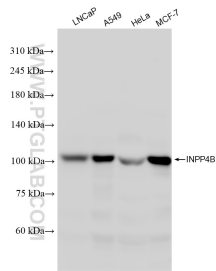
Storage

Storage:
Store at -80°C.
Storage Buffer:
PBS Only

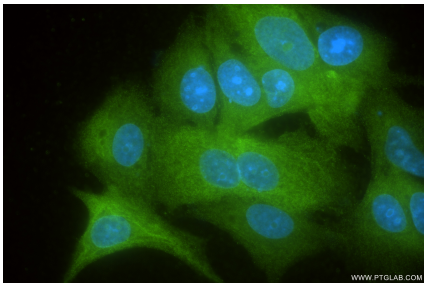
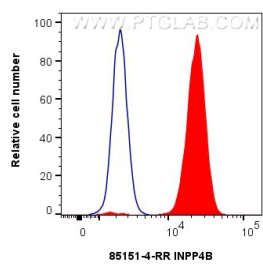
For technical support and original validation data for this product please contact:
T: 1 (888) 4PTGLAB (1-888-478-4522) (toll free in USA), or 1(312) 455-8498 (outside USA)
E: proteintech@ptglab.com
W: ptglab.com

This product is exclusively available under Proteintech Group brand and is not available to purchase from any other manufacturer.

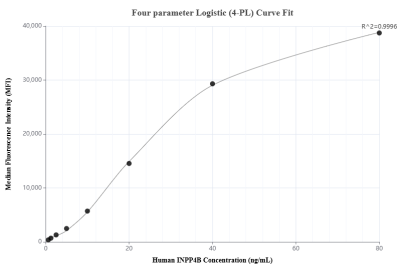
Selected Validation Data



Various lysates were subjected to SDS PAGE followed by western blot with 85151-4-RR (INPP4B antibody) at dilution of 1:10000 incubated at room temperature for 1.5 hours. This data was developed using the same antibody clone with 85151-4-PBS in a different storage buffer formulation.

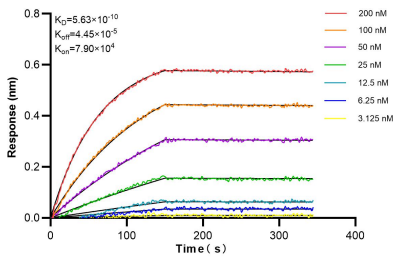


Immunofluorescent analysis of (-20°C Ethanol) fixed MCF-7 cells using INPP4B antibody (85151-4-RR, Clone: 242837H2) at dilution of 1:400 and CoraLite®488-Conjugated Goat Anti-Rabbit IgG(H+L) (SA00013-2). This data was developed using the same antibody clone with 85151-4-PBS in a different storage buffer formulation.



Cytometric bead array standard curve of MP01878-1, INPP4B Recombinant Matched Antibody Pair, PBS Only. Capture antibody: 85151-3-PBS. Detection antibody: 85151-4-PBS. Standard: Ag8676. Range: 0.625-80 ng/mL

1x10⁶ K562 were intracellularly stained with 0.25 ug INPP4B Recombinant antibody (85151-4-RR, Clone:242837H2) and CoraLite®488-Conjugated Goat Anti-Rabbit IgG(H+L) (SA00013-2)(red), or 0.25 ug Rabbit IgG Isotype Control RecAb (98136-1-RR, Clone: 240953C9) (blue). Cells were fixed with 4% PFA and permeabilized with Flow Cytometry Perm Buffer (PF00011-C). This data was developed using the same antibody clone with 85151-4-PBS in a



Biolayer interferometry (BLI) kinetic assays of 85151-4-RR against Human INPP4B were performed. The affinity constant is 0.563 nM.