

For Research Use Only

Mouse CD13 Recombinant antibody, PBS Only (Capture/Detector)

Catalog Number: 85152-2-PBS



Basic Information

Catalog Number: 85152-2-PBS	GenBank Accession Number: NM_008486.2	Purification Method: Protein A purification
Size: 100ug, Concentration: 1 mg/ml by Nanodrop;	GeneID (NCBI): 16790	CloneNo.: 242845B3
Source: Rabbit	UNIPROT ID: P97449	
Isotype: IgG	Full Name: alanyl (membrane) aminopeptidase	
Immunogen Catalog Number: EG3592	Calculated MW: 110 kDa	

Applications

Tested Applications:
Cytometric bead array, Sandwich ELISA, Indirect ELISA,
Sample test

Species Specificity:
mouse

Product Information

85152-2-PBS targets CD13 as part of a matched antibody pair:

MP01861-1: 85152-2-PBS capture and 85152-3-PBS detection (validated in Cytometric bead array)

MP01861-3: 85152-1-PBS capture and 85152-2-PBS detection (validated in Sandwich ELISA)

Unconjugated rabbit recombinant monoclonal antibody in PBS only (BSA and azide free) storage buffer at a concentration of 1 mg/mL, ready for conjugation. Created using Proteintech's proprietary in-house recombinant technology. Recombinant production enables unrivalled batch-to-batch consistency, easy scale-up, and future security of supply.

This conjugation ready format makes antibodies ideal for use in many applications including: ELISAs, multiplex assays requiring matched pairs, mass cytometry, and multiplex imaging applications. Antibody use should be optimized by the end user for each application and assay.

Storage

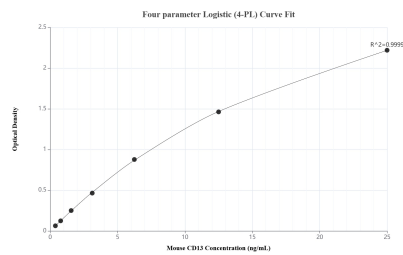
Storage:
Store at -80°C.

Storage Buffer:
PBS only, pH7.3

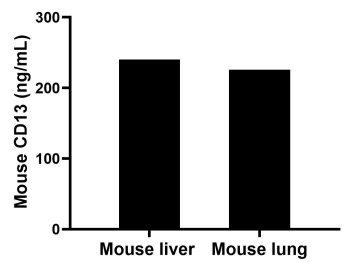
For technical support and original validation data for this product please contact:
T: 1 (888) 4PTGLAB (1-888-478-4522) (toll free in USA), or 1(312) 455-8498 (outside USA)
E: proteintech@ptglab.com
W: ptglab.com

This product is exclusively available under Proteintech Group brand and is not available to purchase from any other manufacturer.

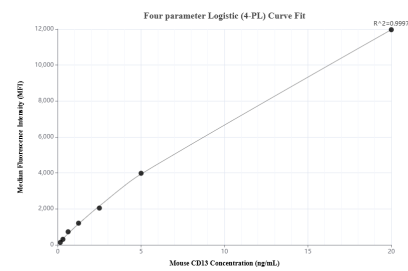
Selected Validation Data



Sandwich ELISA standard curve of MP01861-3, Mouse CD13 Recombinant Matched Antibody Pair - PBS only. 85152-1-PBS was coated to a plate as the capture antibody and incubated with serial dilutions of standard Eg3592. 85152-2-PBS was HRP conjugated as the detection antibody. Range: 0.391-25 ng/mL.



The mean CD13 concentration was determined to be 240.44 ng/mL in mouse liver tissue extract based on a 3.70 mg/mL extract load and 226.10 ng/mL in mouse lung tissue extract based on a 5.90 mg/mL extract load.



Cytometric bead array standard curve of MP01861-1, MOUSE CD13 Recombinant Matched Antibody Pair, PBS Only. Capture antibody: 85152-2-PBS. Detection antibody: 85152-3-PBS. Standard: Eg3592. Range: 0.156-20 ng/mL.