

For Research Use Only

ZFP36L2 Recombinant antibody, PBS Only (Detector)

Catalog Number: 85154-1-PBS



Basic Information

Catalog Number: 85154-1-PBS	GenBank Accession Number: BC005010	Purification Method: Protein A purification
Size: 100ug , Concentration: 1 mg/ml by Nanodrop;	GeneID (NCBI): 678	CloneNo.: 242776C11
Source: Rabbit	UNIPROT ID: P47974	
Isotype: IgG	Full Name: zinc finger protein 36, C3H type-like 2	
Immunogen Catalog Number: AG13515	Calculated MW: 51 kDa	

Applications

Tested Applications:
Cytometric bead array, Sandwich ELISA, Indirect ELISA, Sample test

Species Specificity:
human

Product Information

85154-1-PBS targets ZFP36L2 as part of a matched antibody pair:

MP01862-1: 85154-3-PBS capture and 85154-1-PBS detection (validated in Cytometric bead array)

MP01862-2: 85154-2-PBS capture and 85154-1-PBS detection (validated in Cytometric bead array)

MP01862-3: 85154-6-PBS capture and 85154-1-PBS detection (validated in Sandwich ELISA)

Unconjugated rabbit recombinant monoclonal antibody in PBS only (BSA and azide free) storage buffer at a concentration of 1 mg/mL, ready for conjugation. Created using Proteintech's proprietary in-house recombinant technology. Recombinant production enables unrivalled batch-to-batch consistency, easy scale-up, and future security of supply.

This conjugation ready format makes antibodies ideal for use in many applications including: ELISAs, multiplex assays requiring matched pairs, mass cytometry, and multiplex imaging applications. Antibody use should be optimized by the end user for each application and assay.

Storage

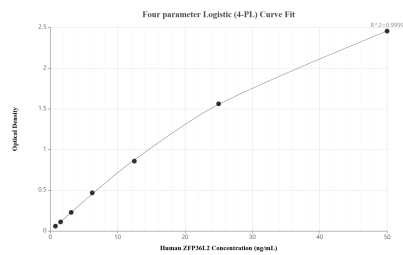
Storage:
Store at -80°C.

Storage Buffer:
PBS only, pH7.3

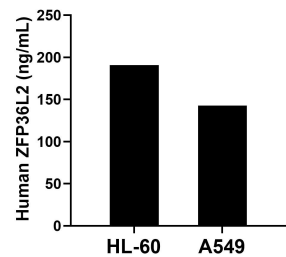
For technical support and original validation data for this product please contact:
T: 1 (888) 4PTGLAB (1-888-478-4522) (toll free in USA), or 1(312) 455-8498 (outside USA)
E: proteintech@ptglab.com
W: ptglab.com

This product is exclusively available under Proteintech Group brand and is not available to purchase from any other manufacturer.

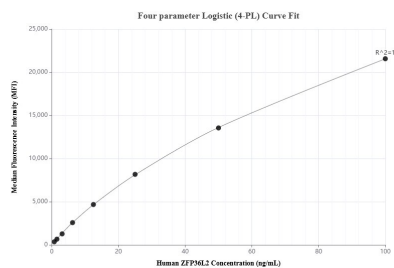
Selected Validation Data



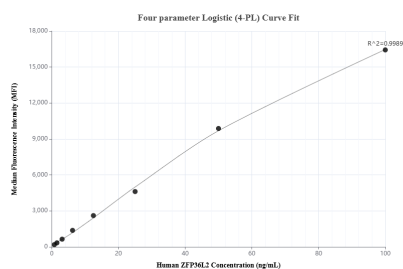
Sandwich ELISA standard curve of MP01862-3, Human ZFP36L2 Recombinant Matched Antibody Pair - PBS only. 85154-6-PBS was coated to a plate as the capture antibody and incubated with serial dilutions of standard Ag13515. 85154-1-PBS was HRP conjugated as the detection antibody. Range: 0.781-50 ng/mL



The mean ZFP36L2 concentration was determined to be 190.62 ng/mL in HL-60 cell extract based on a 1.50 mg/mL extract load and 142.84 ng/mL in A549 cell extract based on a 2.60 mg/mL extract load.



Cytometric bead array standard curve of MP01862-1, ZFP36L2 Recombinant Matched Antibody Pair, PBS Only. Capture antibody: 85154-3-PBS. Detection antibody: 85154-1-PBS. Standard: Ag13515. Range: 0.781-100 ng/mL



Cytometric bead array standard curve of MP01862-2, ZFP36L2 Recombinant Matched Antibody Pair, PBS Only. Capture antibody: 85154-2-PBS. Detection antibody: 85154-1-PBS. Standard: Ag13515. Range: 0.781-100 ng/mL