

For Research Use Only

# ZFP36L2 Recombinant antibody, PBS Only

Catalog Number: 85154-4-PBS



## Basic Information

<b>Catalog Number:</b> 85154-4-PBS	<b>GenBank Accession Number:</b> BC005010	<b>Purification Method:</b> Protein A purification
<b>Size:</b> 100ug , Concentration: 1 mg/ml by Nanodrop;	<b>GeneID (NCBI):</b> 678	<b>CloneNo.:</b> 242776C5
<b>Source:</b> Rabbit	<b>UNIPROT ID:</b> P47974	
<b>Isotype:</b> IgG	<b>Full Name:</b> zinc finger protein 36, C3H type-like 2	
<b>Immunogen Catalog Number:</b> AG13515	<b>Calculated MW:</b> 51 kDa	
	<b>Observed MW:</b> 60 kDa	

## Applications

**Tested Applications:**  
WB, Indirect ELISA

**Species Specificity:**  
human, mouse, monkey

## Background Information

ZFP36L2 (Zinc finger protein 36 like 2) is an RNA-binding protein belonging to the ZFP36 family, which regulates gene expression at the post-transcriptional level by binding and destabilizing certain AU-rich elements (ARE) located in the 3' untranslated regions (3'UTRs) of mRNA (PMID: 29518627). Moreover, ZFP36L2 is a key protein that controls S-phase progression in the case of genome instability (PMID: 29449217).

## Storage

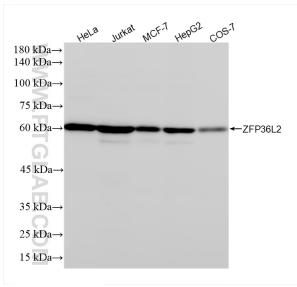
**Storage:**  
Store at -80°C.

**Storage Buffer:**  
PBS only, pH7.3

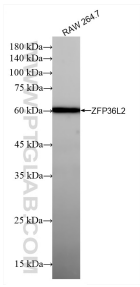
For technical support and original validation data for this product please contact:  
T: 1 (888) 4PTGLAB (1-888-478-4522) (toll free in USA), or 1(312) 455-8498 (outside USA)  
E: [proteintech@ptglab.com](mailto:proteintech@ptglab.com)  
W: [ptglab.com](http://ptglab.com)

This product is exclusively available under Proteintech Group brand and is not available to purchase from any other manufacturer.

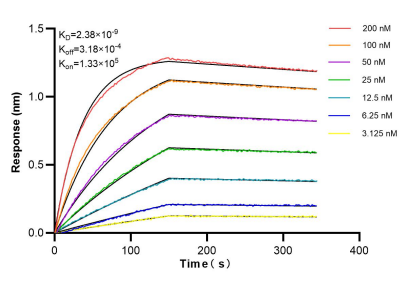
## Selected Validation Data



Various lysates were subjected to SDS PAGE followed by western blot with 85154-4-RR (ZFP36L2 antibody) at dilution of 1:10000 incubated at room temperature for 1.5 hours. This data was developed using the same antibody clone with 85154-4-PBS in a different storage buffer formulation.



Various lysates were subjected to SDS PAGE followed by western blot with 85154-4-RR (ZFP36L2 antibody) at dilution of 1:10000 incubated at room temperature for 1.5 hours. This data was developed using the same antibody clone with 85154-4-PBS in a different storage buffer formulation.



Biolayer interferometry (BLI) kinetic assays of 85154-4-RR against Human ZFP36L2 were performed. The affinity constant is 2.38 nM.