

For Research Use Only

ZFP36L2 Recombinant antibody

Catalog Number: 85154-4-RR



Basic Information

Catalog Number: 85154-4-RR	GenBank Accession Number: BC005010	Purification Method: Protein A purification
Size: 100ul , Concentration: 1000 µg/ml by Nanodrop;	GeneID (NCBI): 678	CloneNo.: 242776C5
Source: Rabbit	UNIPROT ID: P47974	Recommended Dilutions: WB 1:5000-1:50000
Isotype: IgG	Full Name: zinc finger protein 36, C3H type-like 2	
Immunogen Catalog Number: AG13515	Calculated MW: 51 kDa	
	Observed MW: 60 kDa	

Applications

Tested Applications: WB, ELISA	Positive Controls: WB : HeLa cells, RAW 264.7 cells, Jurkat cells, MCF-7 cells, HepG2 cells, COS-7 cells
Species Specificity: human, mouse, monkey	

Background Information

ZFP36L2 (Zinc finger protein 36 like 2) is an RNA-binding protein belonging to the ZFP36 family, which regulates gene expression at the post-transcriptional level by binding and destabilizing certain AU-rich elements (ARE) located in the 3' untranslated regions (3'UTRs) of mRNA (PMID: 29518627). Moreover, ZFP36L2 is a key protein that controls S-phase progression in the case of genome instability (PMID: 29449217).

Storage

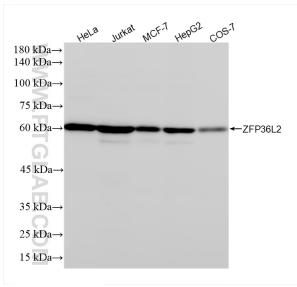
Storage:
Store at -20°C. Stable for one year after shipment.
Storage Buffer:
PBS with 0.02% sodium azide and 50% glycerol, pH7.3
Aliquoting is unnecessary for -20°C storage

*** 20ul sizes contain 0.1% BSA

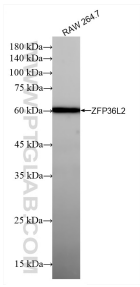
For technical support and original validation data for this product please contact:
T: 1 (888) 4PTGLAB (1-888-478-4522) (toll free in USA), or 1(312) 455-8498 (outside USA)
E: proteintech@ptglab.com
W: ptglab.com

This product is exclusively available under Proteintech Group brand and is not available to purchase from any other manufacturer.

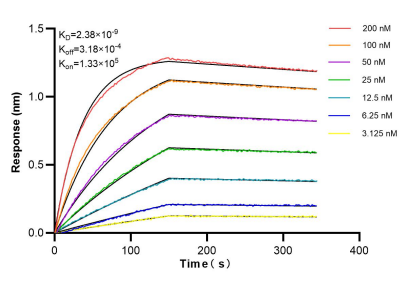
Selected Validation Data



Various lysates were subjected to SDS PAGE followed by western blot with 85154-4-RR (ZFP36L2 antibody) at dilution of 1:10000 incubated at room temperature for 1.5 hours.



Various lysates were subjected to SDS PAGE followed by western blot with 85154-4-RR (ZFP36L2 antibody) at dilution of 1:10000 incubated at room temperature for 1.5 hours.



Biolayer interferometry (BLI) kinetic assays of 85154-4-RR against Human ZFP36L2 were performed. The affinity constant is 2.38 nM.