

For Research Use Only

NPM3 Recombinant antibody

Catalog Number: 85156-4-RR



Basic Information

Catalog Number: 85156-4-RR	GenBank Accession Number: BC054868	Purification Method: Protein A purification
Size: 100ul , Concentration: 1000 µg/ml by Nanodrop;	GeneID (NCBI): 10360	CloneNo.: 242863C5
Source: Rabbit	UNIPROT ID: O75607	Recommended Dilutions: WB 1:5000-1:50000
Isotype: IgG	Full Name: nucleophosmin/nucleoplasmin, 3	
Immunogen Catalog Number: AG2564	Calculated MW: 178 aa, 19 kDa	
	Observed MW: 20-25 kDa	

Applications

Tested Applications: WB, ELISA	Positive Controls:
Species Specificity: human	WB : HeLa cells, HuH-7 cells, K-562 cells, Raji cells, Jurkat cells

Background Information

NPM3, a member of the nucleophosmin/ nucleoplasmin family, lacks intrinsic histone chaperone activity, inhibits histone assembly activity of NPM1 in vitro, and dramatically enhances transcription in a cellular system (PMID: 20073534). Human NPM3 is an abundant and widely expressed protein with primarily nuclear localization. The NPM3 protein migrated in SDS-PAGE gels as a doublet with apparent molecular masses of 25 and 27 kDa, which are larger than the 20.5 kDa mass predicted by the deduced amino acid sequence including the HA tag (PMID: 11722795). The NPM3 antibody can detect two bands with MW between 20-27 kDa.

Storage

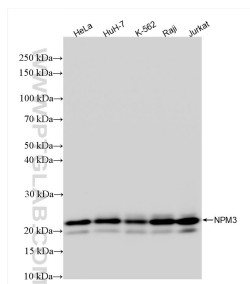
Storage:
Store at -20°C. Stable for one year after shipment.
Storage Buffer:
PBS with 0.02% sodium azide and 50% glycerol pH 7.3.
Aliquoting is unnecessary for -20°C storage

*** 20ul sizes contain 0.1% BSA

For technical support and original validation data for this product please contact:
T: 1 (888) 4PTGLAB (1-888-478-4522) (toll free in USA), or 1(312) 455-8498 (outside USA)
E: proteintech@ptglab.com
W: ptglab.com

This product is exclusively available under Proteintech Group brand and is not available to purchase from any other manufacturer.

Selected Validation Data



Various lysates were subjected to SDS PAGE followed by western blot with 85156-4-RR (NPM3 antibody) at dilution of 1:10000 incubated at room temperature for 1.5 hours.