

For Research Use Only

SORBS1 Recombinant antibody, PBS Only (Capture)

Catalog Number: 85158-2-PBS



Basic Information

Catalog Number: 85158-2-PBS	GenBank Accession Number: BC042612	Purification Method: Protein A purification
Size: 100ug , Concentration: 1 mg/ml by Nanodrop;	GeneID (NCBI): 10580	CloneNo.: 242797G4
Source: Rabbit	UNIPROT ID: Q9BX66	
Isotype: IgG	Full Name: sorbin and SH3 domain containing 1	
Immunogen Catalog Number: AG4828	Calculated MW: 1292 aa, 142 kDa	

Applications

Tested Applications:
Cytometric bead array, Sandwich ELISA, Indirect ELISA, Sample test

Species Specificity:
human

Product Information

85158-2-PBS targets SORBS1 as part of a matched antibody pair:

MP01871-1: 85158-2-PBS capture and 85158-3-PBS detection (validated in Cytometric bead array, Sandwich ELISA)

MP01871-2: 85158-2-PBS capture and 85158-1-PBS detection (validated in Cytometric bead array)

Unconjugated rabbit recombinant monoclonal antibody in PBS only (BSA and azide free) storage buffer at a concentration of 1 mg/mL, ready for conjugation. Created using Proteintech's proprietary in-house recombinant technology. Recombinant production enables unrivalled batch-to-batch consistency, easy scale-up, and future security of supply.

This conjugation ready format makes antibodies ideal for use in many applications including: ELISAs, multiplex assays requiring matched pairs, mass cytometry, and multiplex imaging applications. Antibody use should be optimized by the end user for each application and assay.

Storage

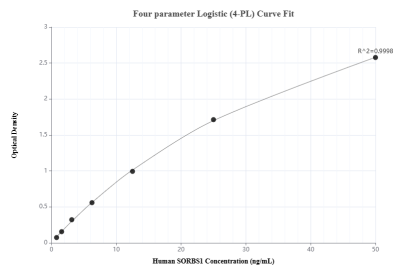
Storage:
Store at -80°C.

Storage Buffer:
PBS Only

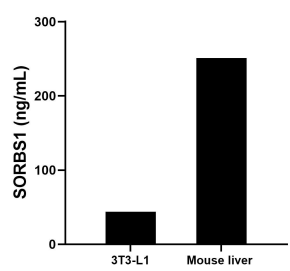
For technical support and original validation data for this product please contact:
T: 1 (888) 4PTGLAB (1-888-478-4522) (toll free in USA), or 1(312) 455-8498 (outside USA)
E: proteintech@ptglab.com
W: ptglab.com

This product is exclusively available under Proteintech Group brand and is not available to purchase from any other manufacturer.

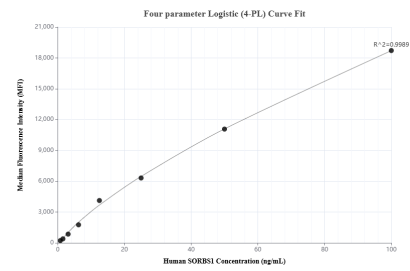
Selected Validation Data



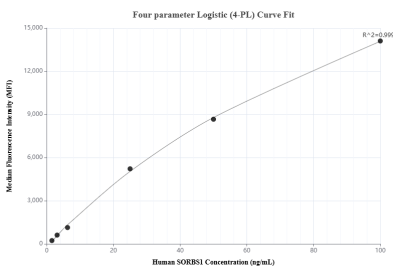
Sandwich ELISA standard curve of MP01871-1, Human SORBS1 Recombinant Matched Antibody Pair - PBS only. 85158-2-PBS was coated to a plate as the capture antibody and incubated with serial dilutions of standard Ag4828. 85158-3-PBS was HRP conjugated as the detection antibody. Range: 0.781-50 ng/mL



The mean SORBS1 concentration was determined to be 43.68 ng/mL in 3T3-L1 cell extract based on a 1.3 mg/mL extract load and 250.85 ng/mL in mouse liver tissue extract based on a 3.7 mg/mL extract load.



Cytometric bead array standard curve of MP01871-1, SORBS1 Recombinant Matched Antibody Pair, PBS Only. Capture antibody: 85158-2-PBS. Detection antibody: 85158-3-PBS. Standard: Ag4828. Range: 0.781-100 ng/mL



Cytometric bead array standard curve of MP01871-2, SORBS1 Recombinant Matched Antibody Pair, PBS Only. Capture antibody: 85158-2-PBS. Detection antibody: 85158-1-PBS. Standard: Ag4828. Range: 1.563-100 ng/mL