

For Research Use Only

Mouse DPP4/CD26 Recombinant antibody, PBS Only (Detector)

Catalog Number: 85159-2-PBS



Basic Information

Catalog Number: 85159-2-PBS	GenBank Accession Number: NM_010074.3	Purification Method: Protein A purification
Size: 100ug , Concentration: 1 mg/ml by Nanodrop;	GeneID (NCBI): 13482	CloneNo.: 242823D2
Source: Rabbit	UNIPROT ID: P28843	
Isotype: IgG	Full Name: dipeptidylpeptidase 4	
Immunogen Catalog Number: EG1384	Calculated MW: 87 kDa	

Applications

Tested Applications:
Cytometric bead array, Sandwich ELISA, Indirect ELISA, Sample test

Species Specificity:
mouse

Product Information

85159-2-PBS targets DPP4/CD26 as part of a matched antibody pair:

MP01879-2: 85159-3-PBS capture and 85159-2-PBS detection (validated in Cytometric bead array)

MP01879-3: 85159-4-PBS capture and 85159-2-PBS detection (validated in Sandwich ELISA)

Unconjugated rabbit recombinant monoclonal antibody in PBS only (BSA and azide free) storage buffer at a concentration of 1 mg/mL, ready for conjugation. Created using Proteintech's proprietary in-house recombinant technology. Recombinant production enables unrivalled batch-to-batch consistency, easy scale-up, and future security of supply.

This conjugation ready format makes antibodies ideal for use in many applications including: ELISAs, multiplex assays requiring matched pairs, mass cytometry, and multiplex imaging applications. Antibody use should be optimized by the end user for each application and assay.

Storage

Storage:
Store at -80°C.
Storage Buffer:
PBS only, pH7.3

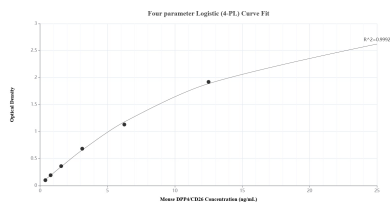
For technical support and original validation data for this product please contact:

T: 1 (888) 4PTGLAB (1-888-478-4522) (toll free in USA), or 1(312) 455-8498 (outside USA)

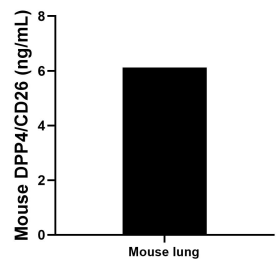
E: proteintech@ptglab.com
W: ptglab.com

This product is exclusively available under Proteintech Group brand and is not available to purchase from any other manufacturer.

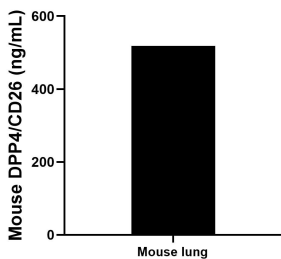
Selected Validation Data



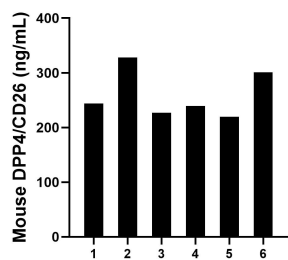
Sandwich ELISA standard curve of MP01879-3, Mouse DPP4/CD26 Recombinant Matched Antibody Pair - PBS only. 85159-4-PBS was coated to a plate as the capture antibody and incubated with serial dilutions of standard Eg1384. 85159-2-PBS was HRP conjugated as the detection antibody. Range: 0.391-25 ng/mL



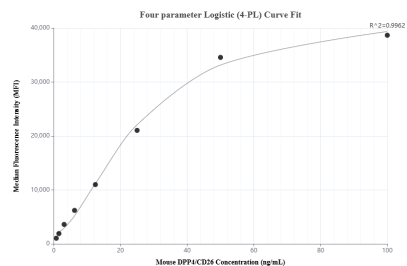
Mouse lung (3 lungs in 1-2 mm pieces in 100 mL of medium) was cultured in RPMI supplemented. An aliquot of the cell culture supernatant was removed, assayed for DPP4/CD26, and measured 6.12 ng/mL.



The mean DPP4/CD26 concentration was determined to be 518.45 ng/mL in mouse lung tissue extract based on a 5.90 mg/mL extract load.



Serum of six mice was measured. The DPP4/CD26 concentration of detected samples was determined to be 259.81 ng/mL with a range of 219.51-328.25 ng/mL.



Cytometric bead array standard curve of MP01879-2, MOUSE DPP4/CD26 Recombinant Matched Antibody Pair, PBS Only. Capture antibody: 85159-3-PBS. Detection antibody: 85159-2-PBS. Standard: Eg1384. Range: 0.781-100 ng/mL.