

For Research Use Only

Mouse DPP4/CD26 Recombinant antibody, PBS Only (Capture)

Catalog Number: 85159-3-PBS



Basic Information

Catalog Number: 85159-3-PBS	GenBank Accession Number: NM_010074.3	Purification Method: Protein A purification
Size: 100ug , Concentration: 1 mg/ml by Nanodrop;	GeneID (NCBI): 13482	CloneNo.: 242823E10
Source: Rabbit	UNIPROT ID: P28843	
Isotype: IgG	Full Name: dipeptidylpeptidase 4	
Immunogen Catalog Number: EG1384	Calculated MW: 87 kDa	
	Observed MW: 110 kDa	

Applications

Tested Applications:
WB, IHC, Cytometric bead array, Indirect ELISA

Species Specificity:
mouse

Product Information

85159-3-PBS targets DPP4/CD26 as part of a matched antibody pair:

MP01879-1: 85159-3-PBS capture and 85159-1-PBS detection (validated in Cytometric bead array)

MP01879-2: 85159-3-PBS capture and 85159-2-PBS detection (validated in Cytometric bead array)

Unconjugated rabbit recombinant monoclonal antibody in PBS only (BSA and azide free) storage buffer at a concentration of 1 mg/mL, ready for conjugation. Created using Proteintech's proprietary in-house recombinant technology. Recombinant production enables unrivalled batch-to-batch consistency, easy scale-up, and future security of supply.

This conjugation ready format makes antibodies ideal for use in many applications including: ELISAs, multiplex assays requiring matched pairs, mass cytometry, and multiplex imaging applications. Antibody use should be optimized by the end user for each application and assay.

Background Information

CD26, also known as DPP4 (dipeptidyl peptidase-4), is a 110 kDa type II cell-surface glycoprotein widely expressed on T cells, activated B cells, activated NK cells and myeloid cells as well as on epithelial cells, fibroblasts, mesothelium, and endothelial cells of a variety of tissues (PMID:33777580; 26919392). It has ecto-enzyme activity in its extracellular domain and cleaves amino-terminal dipeptides with either L-proline or L-alanine at the penultimate position (PMID: 9553764). CD26 plays roles in diverse biological processes such as immunoregulation, glucose homeostasis, and tumorigenesis (PMID: 33777580).

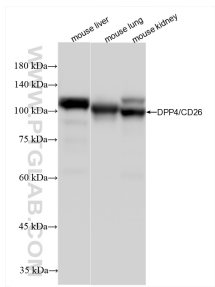
Storage

Storage:
Store at -80°C.
Storage Buffer:
PBS only, pH7.3

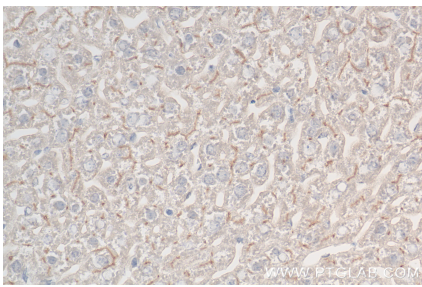
For technical support and original validation data for this product please contact:
T: 1 (888) 4PTGLAB (1-888-478-4522) (toll free in USA), or 1(312) 455-8498 (outside USA)
E: proteintech@ptglab.com
W: ptglab.com

This product is exclusively available under Proteintech Group brand and is not available to purchase from any other manufacturer.

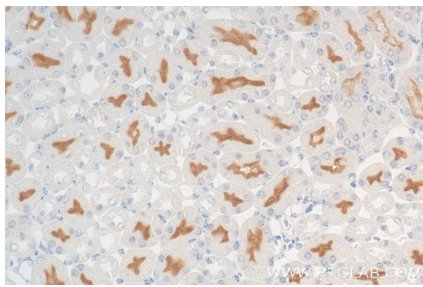
Selected Validation Data



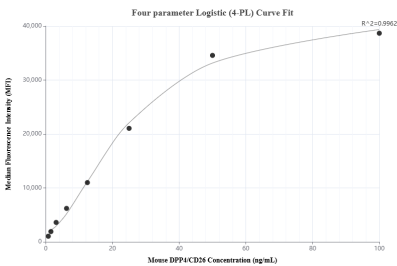
Various lysates were subjected to SDS PAGE followed by western blot with 85159-3-RR (DPP4/CD26 antibody) at dilution of 1:10000 incubated at room temperature for 1.5 hours. This data was developed using the same antibody clone with 85159-3-PBS in a different storage buffer formulation.



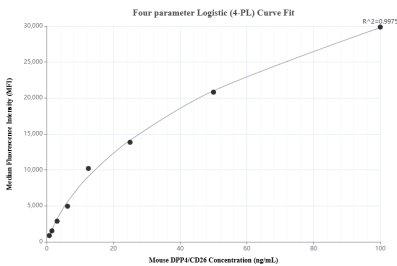
Immunohistochemical analysis of paraffin-embedded mouse liver tissue slide using 85159-3-RR (DPP4/CD26 antibody) at dilution of 1:800 (under 40x lens). Heat mediated antigen retrieval with Tris-EDTA buffer (pH 9.0). This data was developed using the same antibody clone with 85159-3-PBS in a different storage buffer formulation.



Immunohistochemical analysis of paraffin-embedded mouse kidney tissue slide using 85159-3-RR (DPP4/CD26 antibody) at dilution of 1:800 (under 40x lens). Heat mediated antigen retrieval with Tris-EDTA buffer (pH 9.0). This data was developed using the same antibody clone with 85159-3-PBS in a different storage buffer formulation.



Cytometric bead array standard curve of MP01879-2, MOUSE DPP4/CD26 Recombinant Matched Antibody Pair, PBS Only. Capture antibody: 85159-3-PBS. Detection antibody: 85159-2-PBS. Standard: Eg1384. Range: 0.781-100 ng/mL



Cytometric bead array standard curve of MP01879-1, MOUSE DPP4/CD26 Recombinant Matched Antibody Pair, PBS Only. Capture antibody: 85159-3-PBS. Detection antibody: 85159-1-PBS. Standard: Eg1384. Range: 0.781-100 ng/mL