

For Research Use Only

Mouse Cd44 Recombinant monoclonal antibody, PBS Only (Detector)

Catalog Number: 85163-9-PBS



Basic Information

Catalog Number: 85163-9-PBS	GenBank Accession Number: NM_009851.2	Purification Method: Protein A purification
Size: 100ug , Concentration: 1 mg/ml by Nanodrop;	GeneID (NCBI): 12505	CloneNo.: 242666D3
Source: Rabbit	UNIPROT ID: NP_033981	
Isotype: IgG	Full Name: CD44 antigen	
Immunogen Catalog Number: EG3159	Calculated MW: 86 kDa	

Applications

Tested Applications:
Cytometric bead array, Sandwich ELISA, Indirect ELISA

Species Specificity:
mouse

Product Information

85163-9-PBS targets Cd44 as part of a matched antibody pair:

MP01873-4: 85163-8-PBS capture and 85163-9-PBS detection (validated in Cytometric bead array)

MP01873-5: 85163-5-PBS capture and 85163-9-PBS detection (validated in Sandwich ELISA)

Unconjugated rabbit recombinant monoclonal antibody in PBS only (BSA and azide free) storage buffer at a concentration of 1 mg/mL, ready for conjugation. Created using Proteintech's proprietary in-house recombinant technology. Recombinant production enables unrivalled batch-to-batch consistency, easy scale-up, and future security of supply.

This conjugation ready format makes antibodies ideal for use in many applications including: ELISAs, multiplex assays requiring matched pairs, mass cytometry, and multiplex imaging applications. Antibody use should be optimized by the end user for each application and assay.

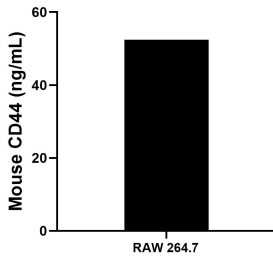
Storage

Storage:
Store at -80°C.
Storage Buffer:
PBS only, pH7.3

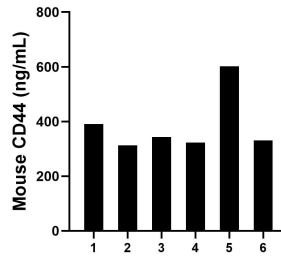
For technical support and original validation data for this product please contact:
T: 1 (888) 4PTGLAB (1-888-478-4522) (toll free in USA), or 1(312) 455-8498 (outside USA) E: proteintech@ptglab.com
W: ptglab.com

This product is exclusively available under Proteintech Group brand and is not available to purchase from any other manufacturer.

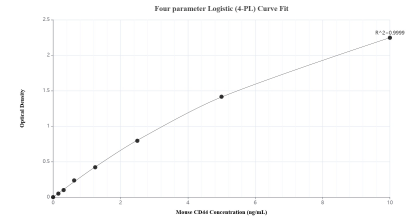
Selected Validation Data



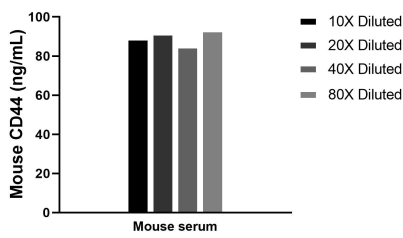
The mean CD44 concentration was determined to be 52.46 ng/mL in RAW 264.7 cell extract based on a 1.20 mg/mL extract load.



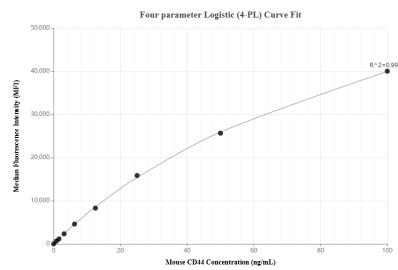
Serum of six mice was measured. The CD44 concentration of detected samples was determined to be 383.66 ng/mL with a range of 313.21-602.16 ng/mL.



Sandwich ELISA standard curve of MP01873-5, Mouse CD44 Recombinant Matched Antibody Pair - PBS only. 85163-5-PBS was coated to a plate as the capture antibody and incubated with serial dilutions of standard Eg3159. 85163-9-PBS was HRP conjugated as the detection antibody. Range: 0.156-10 ng/mL.



The mean CD44 concentration was determined to be 89.5 ng/mL in mouse serum.



Cytometric bead array standard curve of MP01873-4, MOUSE CD44 Recombinant Matched Antibody Pair, PBS Only. Capture antibody: 85163-8-PBS. Detection antibody: 85163-9-PBS. Standard: Eg3159. Range: 0.781-100 ng/mL.