

For Research Use Only

# KIR2DL1 Recombinant antibody

Catalog Number: 85168-1-RR



## Basic Information

Catalog Number:

85168-1-RR

Size:

100ul , Concentration: 1000 ug/ml by Nanodrop;

Source:

Rabbit

Isotype:

IgG

GenBank Accession Number:

BC069344

GeneID (NCBI):

3802

UNIPROT ID:

P43626

Full Name:

killer cell immunoglobulin-like receptor, two domains, long cytoplasmic tail, 1

Calculated MW:

39 kDa

Observed MW:

45 kDa

Purification Method:

Protein A purification

CloneNo.:

242070D11

Recommended Dilutions:

WB 1:500-1:2000

## Applications

Tested Applications:

WB, ELISA

Species Specificity:

human

Positive Controls:

WB : Recombinant protein,

## Background Information

Killer cell immunoglobulin-like receptor 2DL1 (KIR2DL1, also known as CD158A and NKAT1) is an inhibitory receptor of NK cells, with  $\beta$ -arrestin 2 mediated recruitment of the tyrosine phosphatases SHP-1 and SHP-2 to KIR2DL1 and facilitated downstream inhibitory signaling (PMID: 18604210). The effector function of NK cells expressing KIR2DL1 or KIR2DS1 is highly influenced by genetic variability and is calibrated by co-expression of additional NK receptors and cognate HLA-C2 ligands (PMID: 31024561).

## Storage

Storage:

Store at -20°C. Stable for one year after shipment.

Storage Buffer:

PBS with 0.02% sodium azide and 50% glycerol pH 7.3.

Aliquoting is unnecessary for -20°C storage

\*\*\* 20ul sizes contain 0.1% BSA

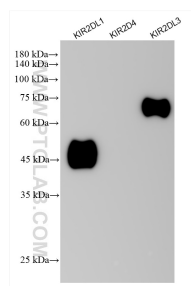
For technical support and original validation data for this product please contact:

T: 1 (888) 4PTGLAB (1-888-478-4522) (toll free in USA), or 1(312) 455-8498 (outside USA)

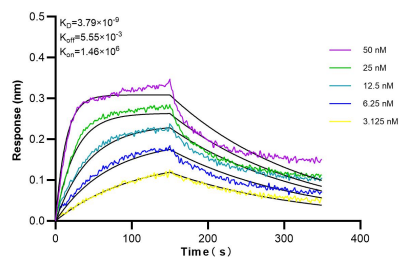
E: [proteintech@ptglab.com](mailto:proteintech@ptglab.com)  
W: [ptglab.com](http://ptglab.com)

This product is exclusively available under Proteintech Group brand and is not available to purchase from any other manufacturer.

## Selected Validation Data



Various lysates were subjected to SDS PAGE followed by western blot with 85168-1-RR (KIR2DL1 antibody) at dilution of 1:1000 incubated at room temperature for 1.5 hours.



Biolayer interferometry (BLI) kinetic assays of 85168-1-RR against Human KIR2DL1 were performed. The affinity constant is 37.9 nM.