

For Research Use Only

KIR2DL1 Recombinant antibody, PBS Only

Catalog Number: 85168-2-PBS



Basic Information

Catalog Number: 85168-2-PBS	GenBank Accession Number: BC069344	Purification Method: Protein A purification
Size: 100ug , Concentration: 1 mg/ml by Nanodrop;	GeneID (NCBI): 3802	CloneNo.: 242398B7
Source: Rabbit	UNIPROT ID: P43626	
Isotype: IgG	Full Name: killer cell immunoglobulin-like receptor, two domains, long cytoplasmic tail, 1	
	Calculated MW: 39 kDa	
	Observed MW: 45 kDa	

Applications

Tested Applications:
WB, Indirect ELISA

Species Specificity:
human

Background Information

Killer cell immunoglobulin-like receptor 2DL1 (KIR2DL1, also known as CD158A and NKAT1) is an inhibitory receptor of NK cells, with β -arrestin 2 mediated recruitment of the tyrosine phosphatases SHP-1 and SHP-2 to KIR2DL1 and facilitated downstream inhibitory signaling (PMID: 18604210). The effector function of NK cells expressing KIR2DL1 or KIR2DS1 is highly influenced by genetic variability and is calibrated by co-expression of additional NK receptors and cognate HLA-C2 ligands (PMID: 31024561).

Storage

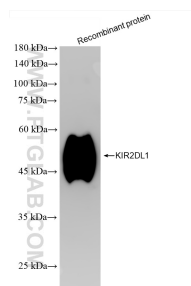
Storage:
Store at -80°C.

Storage Buffer:
PBS Only

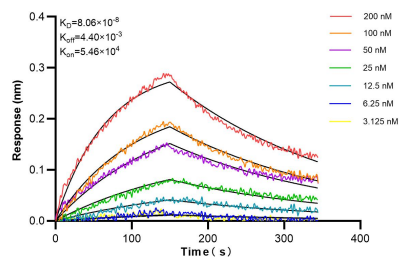
For technical support and original validation data for this product please contact:
T: 1 (888) 4PTGLAB (1-888-478-4522) (toll free in USA), or 1(312) 455-8498 (outside USA)
E: proteintech@ptglab.com
W: ptglab.com

This product is exclusively available under Proteintech Group brand and is not available to purchase from any other manufacturer.

Selected Validation Data



Recombinant protein were subjected to SDS PAGE followed by western blot with 85168-2-RR (KIR2DL1 antibody) at dilution of 1:10000 incubated at room temperature for 1.5 hours. This data was developed using the same antibody clone with 85168-2-PBS in a different storage buffer formulation.



Biolayer interferometry (BLI) kinetic assays of 85168-2-RR against Human KIR2DL1 were performed. The affinity constant is 80.6 nM.