

For Research Use Only

KIR2DL1 Recombinant antibody

Catalog Number: 85168-2-RR



Basic Information

Catalog Number:

85168-2-RR

Size:

100ul , Concentration: 1000 µg/ml by Nanodrop;

Source:

Rabbit

Isotype:

IgG

GenBank Accession Number:

BC069344

GeneID (NCBI):

3802

UNIPROT ID:

P43626

Full Name:

killer cell immunoglobulin-like receptor, two domains, long cytoplasmic tail, 1

Calculated MW:

39 kDa

Observed MW:

45 kDa

Purification Method:

Protein A purification

CloneNo.:

242398B7

Recommended Dilutions:

WB 1:5000-1:50000

Applications

Tested Applications:

WB, ELISA

Species Specificity:

human

Positive Controls:

WB : Recombinant protein,

Background Information

Killer cell immunoglobulin-like receptor 2DL1 (KIR2DL1, also known as CD158A and NKAT1) is an inhibitory receptor of NK cells, with β -arrestin 2 mediated recruitment of the tyrosine phosphatases SHP-1 and SHP-2 to KIR2DL1 and facilitated downstream inhibitory signaling (PMID: 18604210). The effector function of NK cells expressing KIR2DL1 or KIR2DS1 is highly influenced by genetic variability and is calibrated by co-expression of additional NK receptors and cognate HLA-C2 ligands (PMID: 31024561).

Storage

Storage:

Store at -20°C. Stable for one year after shipment.

Storage Buffer:

PBS with 0.02% sodium azide and 50% glycerol pH 7.3.

Aliquoting is unnecessary for -20°C storage

*** 20ul sizes contain 0.1% BSA

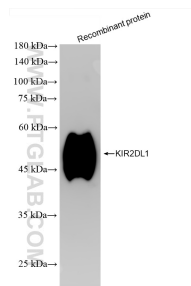
For technical support and original validation data for this product please contact:

T: 1 (888) 4PTGLAB (1-888-478-4522) (toll free in USA), or 1(312) 455-8498 (outside USA)

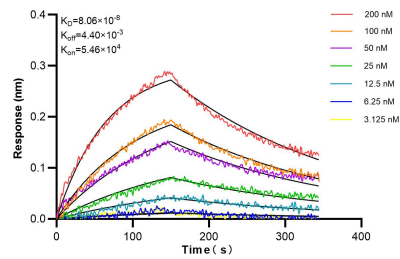
E: proteintech@ptglab.com
W: ptglab.com

This product is exclusively available under Proteintech Group brand and is not available to purchase from any other manufacturer.

Selected Validation Data



Recombinant protein were subjected to SDS PAGE followed by western blot with 85168-2-RR (KIR2DL1 antibody) at dilution of 1:10000 incubated at room temperature for 1.5 hours.



Biolayer interferometry (BLI) kinetic assays of 85168-2-RR against Human KIR2DL1 were performed. The affinity constant is 80.6 nM.