

For Research Use Only

Cleaved Caspase 8/P18 Recombinant antibody

Catalog Number: 85171-3-RR



Basic Information

Catalog Number:

85171-3-RR

Size:

100ul, Concentration: 1000 µg/ml by Nanodrop;

Source:

Rabbit

Isotype:

IgG

GenBank Accession Number:

BC028223

GeneID (NCBI):

841

UNIPROT ID:

Q14790

Full Name:

caspase 8, apoptosis-related cysteine peptidase

Calculated MW:

538 aa, 62 kDa

Observed MW:

55 kDa, 18 kDa

Purification Method:

Protein A purification

CloneNo.:

242445E5

Recommended Dilutions:

WB 1:5000-1:50000

Applications

Tested Applications:

WB, ELISA

Species Specificity:

human

Positive Controls:

WB : Staurosporine treated Jurkat cells,

Background Information

CASP8, also named as MCH5, MACH, FLICE, and CAP4, belongs to the peptidase C14A family. It may participate in the GZMB apoptotic pathways and functions as an upstream regulator in a-bisabolol-induced apoptosis. CASP8 catalyzes an essential intermediate step in the ubiquitination and proteasome-mediated degradation of IRF3(PMID:21816816). It may control diabetic embryopathy-associated apoptosis via regulation of the Bid-stimulated mitochondrion/caspase-9 pathway (PMID:19194987). This antibody recognize the cleaved caspase 8.

Storage

Storage:

Store at -20°C. Stable for one year after shipment.

Storage Buffer:

PBS with 0.02% sodium azide and 50% glycerol pH 7.3.

Aliquoting is unnecessary for -20°C storage

*** 20ul sizes contain 0.1% BSA

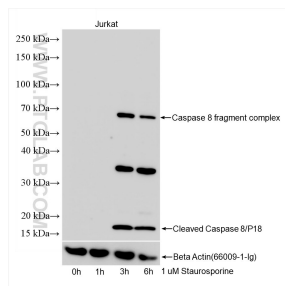
For technical support and original validation data for this product please contact:

T: 1 (888) 4PTGLAB (1-888-478-4522) (toll free in USA), or 1(312) 455-8498 (outside USA)

E: proteintech@ptglab.com
W: ptglab.com

This product is exclusively available under Proteintech Group brand and is not available to purchase from any other manufacturer.

Selected Validation Data



Various lysates were subjected to SDS PAGE followed by western blot with 85171-3-RR (Cleaved Caspase 8/P18 antibody) at dilution of 1:10000 incubated at room temperature for 1.5 hours.