

For Research Use Only

PARP1- Cleaved (Asp214) 1 Recombinant antibody, PBS Only (Capture)

Catalog Number: 85175-1-PBS



Basic Information

Catalog Number: 85175-1-PBS	GenBank Accession Number: BC037545	Purification Method: Protein A purification
Size: 100ug , Concentration: 1 mg/ml by Nanodrop;	GeneID (NCBI): 142	CloneNo.: 242461B10
Source: Rabbit	UNIPROT ID: P09874	
Isotype: IgG	Full Name: poly (ADP-ribose) polymerase 1	
	Calculated MW: 1014 aa, 113 kDa	

Applications

Tested Applications:
Sandwich ELISA, Indirect ELISA, Sample test

Species Specificity:
human

Product Information

85175-1-PBS targets PARP1- Cleaved (Asp214) 1 as part of a matched antibody pair.

MP01904-1: 85175-1-PBS capture and 85175-2-PBS detection (validated in Sandwich ELISA)

Unconjugated rabbit recombinant monoclonal antibody in PBS only (BSA and azide free) storage buffer at a concentration of 1 mg/mL, ready for conjugation. Created using Proteintech's proprietary in-house recombinant technology. Recombinant production enables unrivalled batch-to-batch consistency, easy scale-up, and future security of supply.

This conjugation ready format makes antibodies ideal for use in many applications including: ELISAs, multiplex assays requiring matched pairs, mass cytometry, and multiplex imaging applications. Antibody use should be optimized by the end user for each application and assay.

Storage

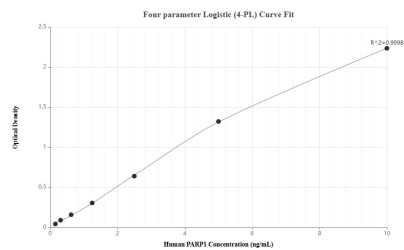
Storage:
Store at -80°C.

Storage Buffer:
PBS only, pH7.3

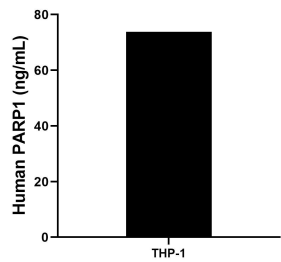
For technical support and original validation data for this product please contact:
T: 1 (888) 4PTGLAB (1-888-478-4522) (toll free in USA), or 1(312) 455-8498 (outside USA)
E: proteintech@ptglab.com
W: ptglab.com

This product is exclusively available under Proteintech Group brand and is not available to purchase from any other manufacturer.

Selected Validation Data



Sandwich ELISA standard curve of MP01904-1, Human PARP1 Recombinant Matched Antibody Pair - PBS only. 85175-1-PBS was coated to a plate as the capture antibody and incubated with serial dilutions of standard SY02434. 85175-2-PBS was HRP conjugated as the detection antibody. Range: 0.156-10 ng/mL



The mean PARP1 concentration was determined to be 73.75 ng/mL in THP-1 cell extract based on a 4.4 mg/mL extract load.