

For Research Use Only

# Cleaved PARP1 (Asp214) Recombinant antibody, PBS Only

Catalog Number: 85175-5-PBS



## Basic Information

<b>Catalog Number:</b> 85175-5-PBS	<b>GenBank Accession Number:</b> BC037545	<b>Purification Method:</b> Protein A purification
<b>Size:</b> 100ug , Concentration: 1 mg/ml by Nanodrop;	<b>GeneID (NCBI):</b> 142	<b>CloneNo.:</b> 243142B10
<b>Source:</b> Rabbit	<b>UNIPROT ID:</b> P09874	
<b>Isotype:</b> IgG	<b>Full Name:</b> poly (ADP-ribose) polymerase 1	
	<b>Calculated MW:</b> 1014 aa, 113 kDa	
	<b>Observed MW:</b> 89 kDa	

## Applications

**Tested Applications:**  
WB, Indirect ELISA

**Species Specificity:**  
human

## Background Information

PARP1 (poly(ADP-ribose) polymerase 1) is a nuclear enzyme catalyzing the poly(ADP-ribosyl)ation of many key proteins in vivo. The normal function of PARP1 is the routine repair of DNA damage. Activated by DNA strand breaks, the PARP1 is cleaved into an 85 to 89-kDa COOH-terminal fragment and a 24 kDa NH2-terminal peptide by caspases during the apoptotic process. The appearance of PARP fragments is commonly considered an important biomarker of apoptosis. In addition to caspases, other proteases like calpains, cathepsins, granzymes, and matrix metalloproteinases (MMPs) have also been reported to cleave PARP1 and give rise to fragments ranging from 42-89 kDa.

This antibody only recognizes the cleaved form of PARP1 but not full-length PARP1.

## Storage

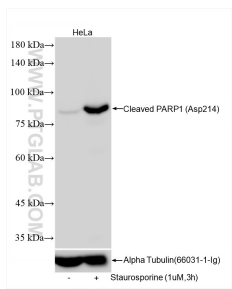
**Storage:**  
Store at -80°C.

**Storage Buffer:**  
PBS only, pH7.3

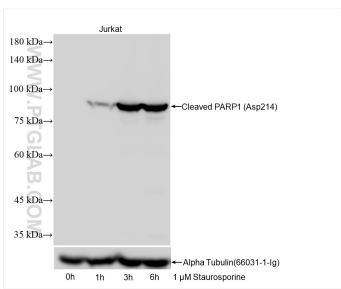
For technical support and original validation data for this product please contact:  
T: 1 (888) 4PTGLAB (1-888-478-4522) (toll free in USA), or 1(312) 455-8498 (outside USA)  
E: [proteintech@ptglab.com](mailto:proteintech@ptglab.com)  
W: [ptglab.com](http://ptglab.com)

This product is exclusively available under Proteintech Group brand and is not available to purchase from any other manufacturer.

## Selected Validation Data



Staurosporine treated HeLa cells were subjected to SDS PAGE followed by western blot with 85175-5-RR (Cleaved PARP1 (Asp214) antibody) at dilution of 1:10000 incubated at room temperature for 1.5 hours. This data was developed using the same antibody clone with 85175-5-PBS in a different storage buffer formulation.



Staurosporine treated Jurkat cells were subjected to SDS PAGE followed by western blot with 85175-5-RR (Cleaved PARP1 (Asp214) antibody) at dilution of 1:10000 incubated at room temperature for 1.5 hours. This data was developed using the same antibody clone with 85175-5-PBS in a different storage buffer formulation.