

For Research Use Only

Cleaved PARP1 (Asp214) Recombinant antibody

Catalog Number: 85175-5-RR



Basic Information

Catalog Number:

85175-5-RR

Size:

100ul, Concentration: 1000 µg/ml by Nanodrop;

Source:

Rabbit

Isotype:

IgG

GenBank Accession Number:

BC037545

GeneID (NCBI):

142

UNIPROT ID:

P09874

Full Name:

poly (ADP-ribose) polymerase 1

Calculated MW:

1014 aa, 113 kDa

Observed MW:

89 kDa

Purification Method:

Protein A purification

CloneNo.:

243142B10

Recommended Dilutions:

WB: 1:5000-1:50000

Applications

Tested Applications:

WB, ELISA

Species Specificity:

human

Positive Controls:

WB : Staurosporine treated HeLa cells, Staurosporine treated Jurkat cells

Background Information

PARP1 (poly(ADP-ribose) polymerase 1) is a nuclear enzyme catalyzing the poly(ADP-ribosyl)ation of many key proteins in vivo. The normal function of PARP1 is the routine repair of DNA damage. Activated by DNA strand breaks, the PARP1 is cleaved into an 85 to 89-kDa COOH-terminal fragment and a 24 kDa NH2-terminal peptide by caspases during the apoptotic process. The appearance of PARP fragments is commonly considered an important biomarker of apoptosis. In addition to caspases, other proteases like calpains, cathepsins, granzymes, and matrix metalloproteinases (MMPs) have also been reported to cleave PARP1 and give rise to fragments ranging from 42-89 kDa.

This antibody only recognizes the cleaved form of PARP1 but not full-length PARP1.

Storage

Storage:

Store at -20°C. Stable for one year after shipment.

Storage Buffer:

PBS with 0.02% sodium azide and 50% glycerol, pH7.3

Aliquoting is unnecessary for -20°C storage

*** 20ul sizes contain 0.1% BSA

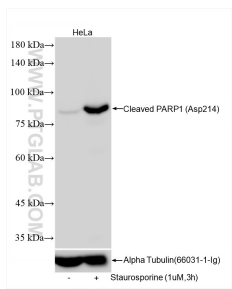
For technical support and original validation data for this product please contact:

T: 1 (888) 4PTGLAB (1-888-478-4522) (toll free in USA), or 1(312) 455-8498 (outside USA)

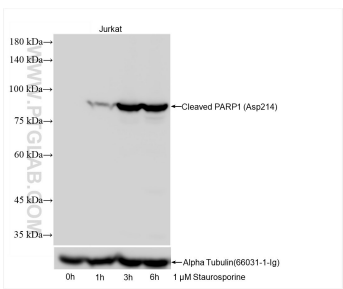
E: proteintech@ptglab.com
W: ptglab.com

This product is exclusively available under Proteintech Group brand and is not available to purchase from any other manufacturer.

Selected Validation Data



Staurosporine treated HeLa cells were subjected to SDS PAGE followed by western blot with 85175-5-RR (Cleaved PARP1 (Asp214) antibody) at dilution of 1:10000 incubated at room temperature for 1.5 hours.



Staurosporine treated Jurkat cells were subjected to SDS PAGE followed by western blot with 85175-5-RR (Cleaved PARP1 (Asp214) antibody) at dilution of 1:10000 incubated at room temperature for 1.5 hours.