

For Research Use Only

PCBP3 Recombinant antibody, PBS Only (Capture/Detector)

Catalog Number: 85180-3-PBS



Basic Information

Catalog Number: 85180-3-PBS	GenBank Accession Number: BC012061	Purification Method: Protein A purification
Size: 100ug , Concentration: 1 mg/ml by Nanodrop;	GeneID (NCBI): 54039	CloneNo.: 242791F11
Source: Rabbit	UNIPROT ID: P57721	
Isotype: IgG	Full Name: poly(rC) binding protein 3	
Immunogen Catalog Number: AG9202	Calculated MW: 313 aa, 33 kDa	
	Observed MW: 39 kDa	

Applications

Tested Applications:
WB, Cytometric bead array, Indirect ELISA

Species Specificity:
human, mouse, rat

Product Information

85180-3-PBS targets PCBP3 as part of a matched antibody pair:

MP01894-1: 85180-2-PBS capture and 85180-3-PBS detection (validated in Cytometric bead array)

MP01894-2: 85180-3-PBS capture and 85180-1-PBS detection (validated in Cytometric bead array)

Unconjugated rabbit recombinant monoclonal antibody in PBS only (BSA and azide free) storage buffer at a concentration of 1 mg/mL, ready for conjugation. Created using Proteintech's proprietary in-house recombinant technology. Recombinant production enables unrivalled batch-to-batch consistency, easy scale-up, and future security of supply.

This conjugation ready format makes antibodies ideal for use in many applications including: ELISAs, multiplex assays requiring matched pairs, mass cytometry, and multiplex imaging applications. Antibody use should be optimized by the end user for each application and assay.

Background Information

PCBP3 is a member of the KH-domain protein subfamily. Proteins of this subfamily, also referred to as alpha-CPs, bind to RNA with a specificity for C-rich pyrimidine regions. Alpha-CPs play important roles in post-transcriptional activities and have different cellular distributions. PCBP3 is broadly expressed in various tissues, including the testis and endometrium. It has been associated with diseases such as dementia.

Storage

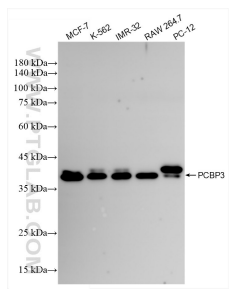
Storage:
Store at -80°C.

Storage Buffer:
PBS only, pH7.3

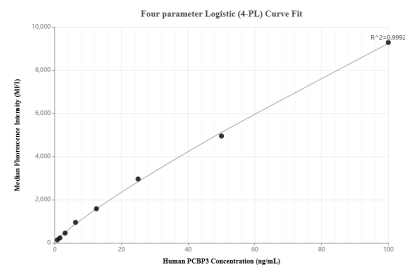
For technical support and original validation data for this product please contact:
T: 1 (888) 4PTGLAB (1-888-478-4522) (toll free in USA), or 1(312) 455-8498 (outside USA)
E: proteintech@ptglab.com
W: ptglab.com

This product is exclusively available under Proteintech Group brand and is not available to purchase from any other manufacturer.

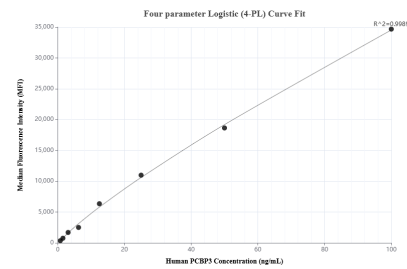
Selected Validation Data



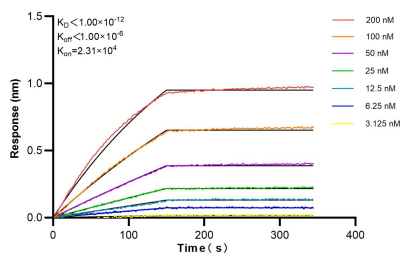
MCF-7 cells were subjected to SDS PAGE followed by western blot with 85180-3-RR (PCBP3 antibody) at dilution of 1:10000 incubated at room temperature for 1.5 hours. This data was developed using the same antibody clone with 85180-3-PBS in a different storage buffer formulation.



Cytometric bead array standard curve of MP01894-2, PCBP3 Recombinant Matched Antibody Pair, PBS Only. Capture antibody: 85180-3-PBS. Detection antibody: 85180-1-PBS. Standard: Ag9202. Range: 0.781-100 ng/mL.



Cytometric bead array standard curve of MP01894-1, PCBP3 Recombinant Matched Antibody Pair, PBS Only. Capture antibody: 85180-2-PBS. Detection antibody: 85180-3-PBS. Standard: Ag9202. Range: 0.781-100 ng/mL.



Biolayer interferometry (BLI) kinetic assays of 85180-3-RR against Human PCBP3 were performed. The affinity constant is below 1 pM.