

For Research Use Only

# PCBP3 Recombinant antibody

Catalog Number: 85180-3-RR



## Basic Information

### Catalog Number:

85180-3-RR

### Size:

100ul, Concentration: 1000 µg/ml by Nanodrop;

### Source:

Rabbit

### Isotype:

IgG

### Immunogen Catalog Number:

AG9202

### GenBank Accession Number:

BC012061

### GeneID (NCBI):

54039

### UNIPROT ID:

P57721

### Full Name:

poly(rC) binding protein 3

### Calculated MW:

313 aa, 33 kDa

### Observed MW:

39 kDa

### Purification Method:

Protein A purification

### CloneNo.:

242791F11

### Recommended Dilutions:

WB 1:5000-1:50000

## Applications

### Tested Applications:

WB, ELISA

### Species Specificity:

human, mouse, rat

### Positive Controls:

WB : MCF-7 cells, K-562 cells, IMR-32 cells, RAW 264.7 cells, PC-12 cells

## Background Information

PCBP3 is a member of the KH-domain protein subfamily. Proteins of this subfamily, also referred to as alpha-CPs, bind to RNA with a specificity for C-rich pyrimidine regions. Alpha-CPs play important roles in post-transcriptional activities and have different cellular distributions. PCBP3 is broadly expressed in various tissues, including the testis and endometrium. It has been associated with diseases such as dementia.

## Storage

### Storage:

Store at -20°C. Stable for one year after shipment.

### Storage Buffer:

PBS with 0.02% sodium azide and 50% glycerol

Aliquoting is unnecessary for -20°C storage

\*\*\* 20ul sizes contain 0.1% BSA

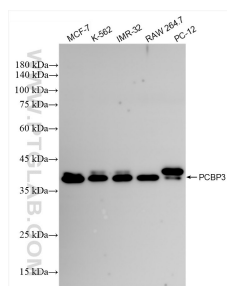
For technical support and original validation data for this product please contact:

T: 1 (888) 4PTGLAB (1-888-478-4522) (toll free in USA), or 1(312) 455-8498 (outside USA)

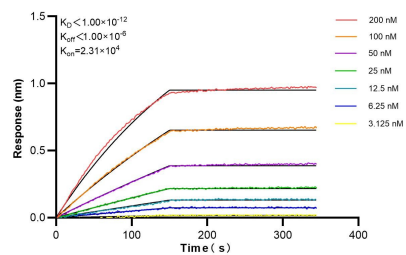
E: [proteintech@ptglab.com](mailto:proteintech@ptglab.com)  
W: [ptglab.com](http://ptglab.com)

This product is exclusively available under Proteintech Group brand and is not available to purchase from any other manufacturer.

## Selected Validation Data



MCF-7 cells were subjected to SDS PAGE followed by western blot with 85180-3-RR (PCBP3 antibody) at dilution of 1:10000 incubated at room temperature for 1.5 hours.



Biolayer interferometry (BLI) kinetic assays of 85180-3-RR against Human PCBP3 were performed. The affinity constant is below 1 pM.