

For Research Use Only

Glycophorin A/CD235a Recombinant antibody, PBS Only (Capture)

Catalog Number: 85182-1-PBS



Basic Information

Catalog Number: 85182-1-PBS	GenBank Accession Number: BC005319	Purification Method: Protein A purification
Size: 100ug , Concentration: 1 mg/ml by Nanodrop;	GeneID (NCBI): 2993	CloneNo.: 242822C9
Source: Rabbit	UNIPROT ID: P02724	
Isotype: IgG	Full Name: glycophorin A (MNS blood group)	
	Calculated MW: 150 aa, 16 kDa	
	Observed MW: 35-38 kDa	

Applications

Tested Applications:
WB, Cytometric bead array, Indirect ELISA

Species Specificity:
human

Product Information

85182-1-PBS targets Glycophorin A/CD235a as part of a matched antibody pair:

MP01888-2: 85182-1-PBS capture and 85182-3-PBS detection (validated in Cytometric bead array)

Unconjugated rabbit recombinant monoclonal antibody in PBS only (BSA and azide free) storage buffer at a concentration of 1 mg/mL, ready for conjugation. Created using Proteintech's proprietary in-house recombinant technology. Recombinant production enables unrivalled batch-to-batch consistency, easy scale-up, and future security of supply.

This conjugation ready format makes antibodies ideal for use in many applications including: ELISAs, multiplex assays requiring matched pairs, mass cytometry, and multiplex imaging applications. Antibody use should be optimized by the end user for each application and assay.

Background Information

Glycophorin A (GYPA), also known as CD235a, is the major transmembrane sialoglycoprotein in erythrocytes. It is a dimeric type I transmembrane protein carrying 15 closely clustered O-linked tetrasaccharides capped with sialic acid/N-acetylneuraminic acid (Neu5Ac). Glycophorin A represents the major sialoglycoprotein of the red blood cell membrane displaying about one million copies per cell. (PMID: 9490702)

Storage

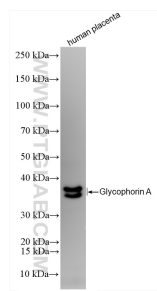
Storage:
Store at -80°C.

Storage Buffer:
PBS Only

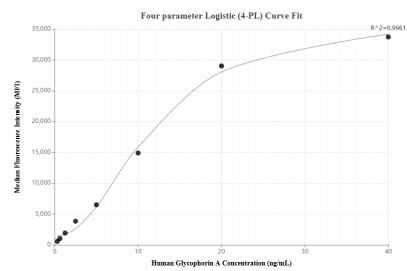
For technical support and original validation data for this product please contact:
T: 1 (888) 4PTGLAB (1-888-478-4522) (toll free in USA), or 1(312) 455-8498 (outside USA)
E: proteintech@ptglab.com
W: ptglab.com

This product is exclusively available under Proteintech Group brand and is not available to purchase from any other manufacturer.

Selected Validation Data



Human placenta tissue was subjected to SDS PAGE, followed by western blot with 85182-1-RR (GYPA antibody) at a dilution of 1:10000 incubated at room temperature for 1.5 hours. This data was developed using the same antibody clone with 85182-1-PBS in a different storage buffer formulation.



Cytometric bead array standard curve of MP01888-2, Glycophorin A Recombinant Matched Antibody Pair, PBS Only. Capture antibody: 85182-1-PBS. Detection antibody: 85182-3-PBS. Standard: Eg2336. Range: 0.313-40 ng/mL.