

For Research Use Only

Glycophorin A/CD235a Recombinant antibody

Catalog Number: 85182-1-RR



Basic Information

Catalog Number: 85182-1-RR	GenBank Accession Number: BC005319	Purification Method: Protein A purification
Size: 100ul , Concentration: 1000 µg/ml by Nanodrop;	GeneID (NCBI): 2993	CloneNo.: 242822C9
Source: Rabbit	UNIPROT ID: P02724	Recommended Dilutions: WB 1:5000-1:50000
Isotype: IgG	Full Name: glycophorin A (MNS blood group)	
	Calculated MW: 150 aa, 16 kDa	
	Observed MW: 35-38 kDa	

Applications

Tested Applications: WB, ELISA	Positive Controls: WB : human placenta tissue,
Species Specificity: human	

Background Information

Glycophorin A (GYPA), also known as CD235a, is the major transmembrane sialoglycoprotein in erythrocytes. It is a dimeric type I transmembrane protein carrying 15 closely clustered O-linked tetrasaccharides capped with sialic acid/N-acetylneuraminic acid (Neu5Ac). Glycophorin A represents the major sialoglycoprotein of the red blood cell membrane displaying about one million copies per cell. (PMID: 9490702)

Storage

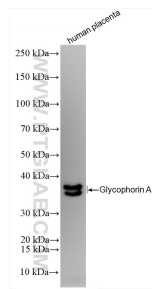
Storage:
Store at -20°C. Stable for one year after shipment.
Storage Buffer:
PBS with 0.02% sodium azide and 50% glycerol pH 7.3.
Aliquoting is unnecessary for -20°C storage

***** 20ul sizes contain 0.1% BSA**

For technical support and original validation data for this product please contact:
T: 1 (888) 4PTGLAB (1-888-478-4522) (toll free in USA), or 1(312) 455-8498 (outside USA)
E: proteintech@ptglab.com
W: ptglab.com

This product is exclusively available under Proteintech Group brand and is not available to purchase from any other manufacturer.

Selected Validation Data



Human placenta tissue was subjected to SDS PAGE, followed by western blot with 85182-1-RR (GYPA antibody) at a dilution of 1:10000 incubated at room temperature for 1.5 hours.