

For Research Use Only

Glycophorin A/CD235a Recombinant antibody, PBS Only (Detector)

Catalog Number: 85182-3-PBS



Basic Information

Catalog Number: 85182-3-PBS	GenBank Accession Number: BC005319	Purification Method: Protein A purification
Size: 100ug , Concentration: 1 mg/ml by Nanodrop;	GeneID (NCBI): 2993	CloneNo.: 242822H5
Source: Rabbit	UNIPROT ID: P02724	
Isotype: IgG	Full Name: glycophorin A (MNS blood group)	
	Calculated MW: 150 aa, 16 kDa	

Applications

Tested Applications:
IHC, Cytometric bead array, Indirect ELISA

Species Specificity:
human

Product Information

85182-3-PBS targets Glycophorin A/CD235a as part of a matched antibody pair:

MP01888-1: 85182-2-PBS capture and 85182-3-PBS detection (validated in Cytometric bead array)

MP01888-2: 85182-1-PBS capture and 85182-3-PBS detection (validated in Cytometric bead array)

Unconjugated rabbit recombinant monoclonal antibody in PBS only (BSA and azide free) storage buffer at a concentration of 1 mg/mL, ready for conjugation. Created using Proteintech's proprietary in-house recombinant technology. Recombinant production enables unrivalled batch-to-batch consistency, easy scale-up, and future security of supply.

This conjugation ready format makes antibodies ideal for use in many applications including: ELISAs, multiplex assays requiring matched pairs, mass cytometry, and multiplex imaging applications. Antibody use should be optimized by the end user for each application and assay.

Background Information

Glycophorin A (GYPA), also known as CD235a, is the major transmembrane sialoglycoprotein in erythrocytes. It is a dimeric type I transmembrane protein carrying 15 closely clustered O-linked tetrasaccharides capped with sialic acid/N-acetylneuraminic acid (Neu5Ac). Glycophorin A represents the major sialoglycoprotein of the red blood cell membrane displaying about one million copies per cell. (PMID: 9490702)

Storage

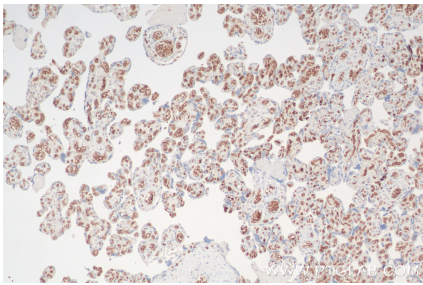
Storage:
Store at -80°C.

Storage Buffer:
PBS Only

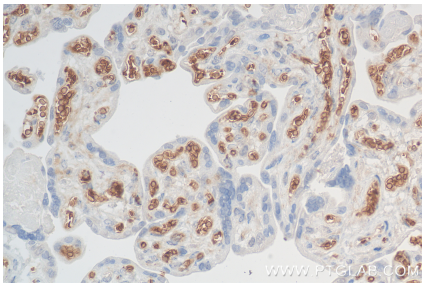
For technical support and original validation data for this product please contact:
T: 1 (888) 4PTGLAB (1-888-478-4522) (toll free in USA), or 1(312) 455-8498 (outside USA)
E: proteintech@ptglab.com
W: ptglab.com

This product is exclusively available under Proteintech Group brand and is not available to purchase from any other manufacturer.

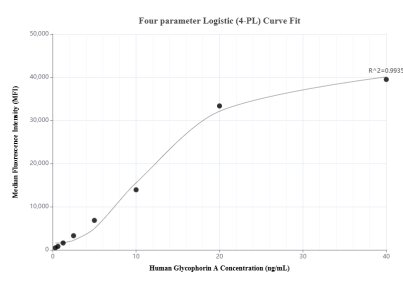
Selected Validation Data



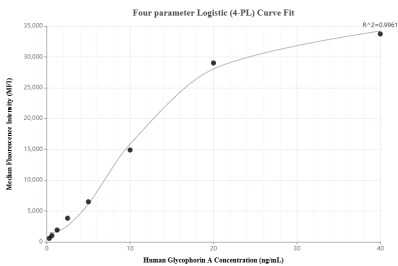
Immunohistochemical analysis of paraffin-embedded human placenta tissue slide using 85182-3-RR (GYPA antibody) at dilution of 1:1000 (under 10x lens). Heat mediated antigen retrieval with Tris-EDTA buffer (pH 9.0). This data was developed using the same antibody clone with 85182-3-PBS in a different storage buffer formulation.



Immunohistochemical analysis of paraffin-embedded human placenta tissue slide using 85182-3-RR (GYPA antibody) at dilution of 1:1000 (under 40x lens). Heat mediated antigen retrieval with Tris-EDTA buffer (pH 9.0). This data was developed using the same antibody clone with 85182-3-PBS in a different storage buffer formulation.



Cytometric bead array standard curve of MP01888-1, Glycophorin A Recombinant Matched Antibody Pair, PBS Only. Capture antibody: 85182-2-PBS. Detection antibody: 85182-3-PBS. Standard: Eg2336. Range: 0.313-40 ng/mL.



Cytometric bead array standard curve of MP01888-2, Glycophorin A Recombinant Matched Antibody Pair, PBS Only. Capture antibody: 85182-1-PBS. Detection antibody: 85182-3-PBS. Standard: Eg2336. Range: 0.313-40 ng/mL.