

For Research Use Only

# Glycophorin A/CD235a Recombinant antibody

Catalog Number: 85182-3-RR



## Basic Information

<b>Catalog Number:</b> 85182-3-RR	<b>GenBank Accession Number:</b> BC005319	<b>Purification Method:</b> Protein A purification
<b>Size:</b> 100ul , Concentration: 1000 µg/ml by Nanodrop;	<b>GeneID (NCBI):</b> 2993	<b>CloneNo.:</b> 242822H5
<b>Source:</b> Rabbit	<b>UNIPROT ID:</b> P02724	<b>Recommended Dilutions:</b> IHC 1:500-1:2000
<b>Isotype:</b> IgG	<b>Full Name:</b> glycophorin A (MNS blood group)	
	<b>Calculated MW:</b> 150 aa, 16 kDa	

## Applications

<b>Tested Applications:</b> IHC, ELISA	<b>Positive Controls:</b> IHC : human placenta tissue,
<b>Species Specificity:</b> human	

**Note-IHC: suggested antigen retrieval with TE buffer pH 9.0; (\*) Alternatively, antigen retrieval may be performed with citrate buffer pH 6.0**

## Background Information

Glycophorin A (GYPA), also known as CD235a, is the major transmembrane sialoglycoprotein in erythrocytes. It is a dimeric type I transmembrane protein carrying 15 closely clustered O-linked tetrasaccharides capped with sialic acid/N-acetylneuraminic acid (Neu5Ac). Glycophorin A represents the major sialoglycoprotein of the red blood cell membrane displaying about one million copies per cell. (PMID: 9490702)

## Storage

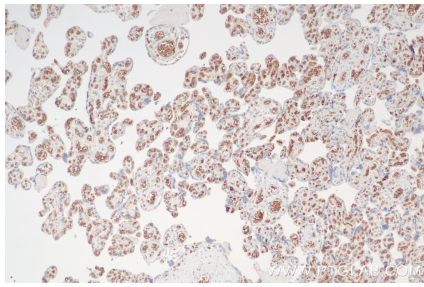
**Storage:**  
Store at -20°C. Stable for one year after shipment.  
**Storage Buffer:**  
PBS with 0.02% sodium azide and 50% glycerol pH 7.3.  
Aliquoting is unnecessary for -20°C storage

\*\*\* 20ul sizes contain 0.1% BSA

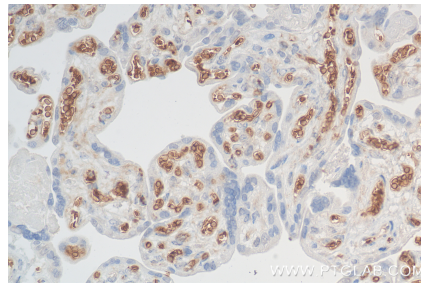
For technical support and original validation data for this product please contact:  
T: 1 (888) 4PTGLAB (1-888-478-4522) (toll free in USA), or 1(312) 455-8498 (outside USA)  
E: [proteintech@ptglab.com](mailto:proteintech@ptglab.com)  
W: [ptglab.com](http://ptglab.com)

This product is exclusively available under Proteintech Group brand and is not available to purchase from any other manufacturer.

## Selected Validation Data



Immunohistochemical analysis of paraffin-embedded human placenta tissue slide using 85182-3-RR (GYPA antibody) at dilution of 1:1000 (under 10x lens). Heat mediated antigen retrieval with Tris-EDTA buffer (pH 9.0).



Immunohistochemical analysis of paraffin-embedded human placenta tissue slide using 85182-3-RR (GYPA antibody) at dilution of 1:1000 (under 40x lens). Heat mediated antigen retrieval with Tris-EDTA buffer (pH 9.0).