

For Research Use Only

NSMCE2 Recombinant antibody

Catalog Number: 85188-4-RR



Basic Information

Catalog Number: 85188-4-RR	GenBank Accession Number: BC032797	Purification Method: Protein A purification
Size: 100ul , Concentration: 1000 µg/ml by Nanodrop;	GeneID (NCBI): 286053	CloneNo.: 242862D8
Source: Rabbit	UNIPROT ID: Q96MF7	Recommended Dilutions: WB 1:5000-1:50000 IF/ICC 1:250-1:1000
Isotype: IgG	Full Name: non-SMC element 2, MMS21 homolog (S. cerevisiae)	
Immunogen Catalog Number: AG4545	Calculated MW: 247 aa, 28 kDa	
	Observed MW: 28-32 kDa	

Applications

Tested Applications: WB, IF/ICC, ELISA	Positive Controls:
Species Specificity: human	WB : HeLa cells, Jurkat cells, K-562 cells, A549 cells, U2OS cells IF/ICC : U2OS cells,

Background Information

NSMCE2 (E3 SUMO-protein ligase NSE2) has a C-terminal Siz/PIAS-RING (SP-RING) domain with E3 SUMO ligase activity (PMID: 15601841). NSMCE2, an essential SUMO ligase of the SMC5/6 complex suppresses cancer and aging in mice (PMID: 26443207).

Storage

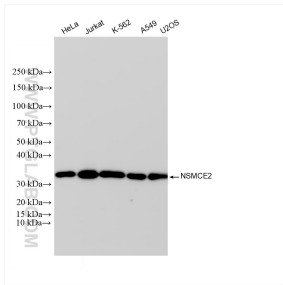
Storage:
Store at -20°C. Stable for one year after shipment.
Storage Buffer:
PBS with 0.02% sodium azide and 50% glycerol pH 7.3.
Aliquoting is unnecessary for -20°C storage

*** 20ul sizes contain 0.1% BSA

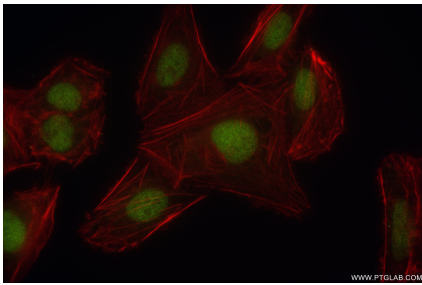
For technical support and original validation data for this product please contact:
T: 1 (888) 4PTGLAB (1-888-478-4522) (toll free in USA), or 1(312) 455-8498 (outside USA)
E: proteintech@ptglab.com
W: ptglab.com

This product is exclusively available under Proteintech Group brand and is not available to purchase from any other manufacturer.

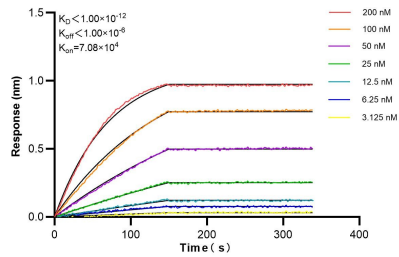
Selected Validation Data



Various lysates were subjected to SDS PAGE followed by western blot with 85188-4-RR (NSMCE2 antibody) at dilution of 1:10000 incubated at room temperature for 1.5 hours.



Immunofluorescent analysis of (4% PFA) fixed U2OS cells using NSMCE2 antibody (85188-4-RR, Clone: 242862D8) at dilution of 1:500 and CoraLite® 488-Conjugated Goat Anti-Rabbit IgG(H+L) (SA00013-2), CL594-Phalloidin (red).



Biolayer interferometry (BLI) kinetic assays of 85188-4-RR against Human NSMCE2 were performed. The affinity constant is below 1 pM.