

For Research Use Only

GREB1 Recombinant antibody, PBS Only

Catalog Number: 85189-4-PBS



Basic Information

Catalog Number: 85189-4-PBS	GenBank Accession Number: NM_014668	Purification Method: Protein A purification
Size: 100ug , Concentration: 1 mg/ml by Nanodrop;	GeneID (NCBI): 9687	CloneNo.: 242882D11
Source: Rabbit	UNIPROT ID: Q4ZG55	
Isotype: IgG	Full Name: GREB1 protein	
Immunogen Catalog Number: AG29908	Calculated MW: 216 kDa	
	Observed MW: 216-240 kDa	

Applications

Tested Applications:
WB, Indirect ELISA

Species Specificity:
human

Background Information

GREB1 (Gene regulated by estrogen in breast cancer protein1) encodes a 1949-amino acid protein that contains an N-terminal Zn-binding domain followed by a circularly permuted catalytically inactive superfamily II helicase domain and a C-terminal Fringe-like GT domain. GREB1 is an early estrogen-responsive gene, and its expression is correlated with estrogen levels in breast cancer patients. GREB1 is implicated in hormone-dependent cancers, such as ovarian, prostate cancer and as a risk factor in endometriosis and variations in bone mineral density.

Storage

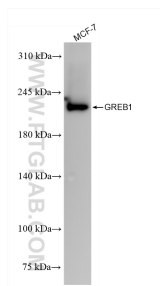
Storage:
Store at -80°C.

Storage Buffer:
PBS Only

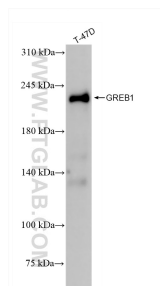
For technical support and original validation data for this product please contact:
T: 1 (888) 4PTGLAB (1-888-478-4522) (toll free in USA), or 1(312) 455-8498 (outside USA)
E: proteintech@ptglab.com
W: ptglab.com

This product is exclusively available under Proteintech Group brand and is not available to purchase from any other manufacturer.

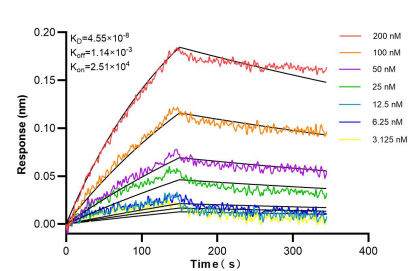
Selected Validation Data



MCF-7 cells were subjected to SDS PAGE followed by western blot with 85189-4-RR (GREB1 antibody) at dilution of 1:10000 incubated at room temperature for 1.5 hours. This data was developed using the same antibody clone with 85189-4-PBS in a different storage buffer formulation.



T-47D cells were subjected to SDS PAGE followed by western blot with 85189-4-RR (GREB1 antibody) at dilution of 1:10000 incubated at room temperature for 1.5 hours. This data was developed using the same antibody clone with 85189-4-PBS in a different storage buffer formulation.



Biolayer interferometry (BLI) kinetic assays of 85189-4-RR against Human GREB1 were performed. The affinity constant is 45.5 nM.