

For Research Use Only

# GREB1 Recombinant antibody

Catalog Number: 85189-4-RR



## Basic Information

<b>Catalog Number:</b> 85189-4-RR	<b>GenBank Accession Number:</b> NM_014668	<b>Purification Method:</b> Protein A purification
<b>Size:</b> 100ul , Concentration: 1000 µg/ml by Nanodrop;	<b>GeneID (NCBI):</b> 9687	<b>CloneNo.:</b> 242882D11
<b>Source:</b> Rabbit	<b>UNIPROT ID:</b> Q4ZG55	<b>Recommended Dilutions:</b> WB 1:5000-1:50000
<b>Isotype:</b> IgG	<b>Full Name:</b> GREB1 protein	
<b>Immunogen Catalog Number:</b> AG29908	<b>Calculated MW:</b> 216 kDa	
	<b>Observed MW:</b> 216-240 kDa	

## Applications

<b>Tested Applications:</b> WB, ELISA	<b>Positive Controls:</b> WB : T-47D cells, MCF-7 cells
<b>Species Specificity:</b> human	

## Background Information

GREB1 (Gene regulated by estrogen in breast cancer protein1) encodes a 1949-amino acid protein that contains an N-terminal Zn-binding domain followed by a circularly permuted catalytically inactive superfamily II helicase domain and a C-terminal Fringe-like GT domain. GREB1 is an early estrogen-responsive gene, and its expression is correlated with estrogen levels in breast cancer patients. GREB1 is implicated in hormone-dependent cancers, such as ovarian, prostate cancer and as a risk factor in endometriosis and variations in bone mineral density.

## Storage

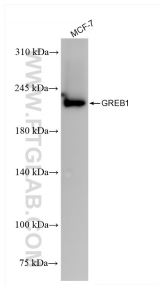
**Storage:**  
Store at -20°C. Stable for one year after shipment.  
**Storage Buffer:**  
PBS with 0.02% sodium azide and 50% glycerol pH 7.3.  
Aliquoting is unnecessary for -20°C storage

\*\*\* 20ul sizes contain 0.1% BSA

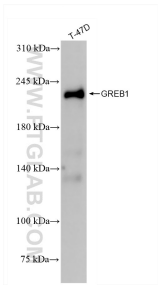
For technical support and original validation data for this product please contact:  
T: 1 (888) 4PTGLAB (1-888-478-4522) (toll free in USA), or 1(312) 455-8498 (outside USA)  
E: [proteintech@ptglab.com](mailto:proteintech@ptglab.com)  
W: [ptglab.com](http://ptglab.com)

This product is exclusively available under Proteintech Group brand and is not available to purchase from any other manufacturer.

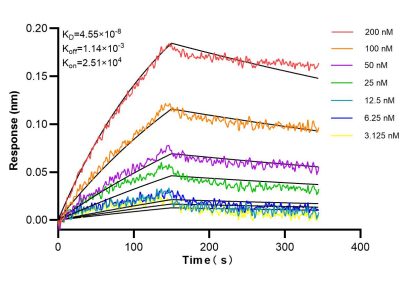
Selected Validation Data



MCF-7 cells were subjected to SDS PAGE followed by western blot with 85189-4-RR (GREB1 antibody) at dilution of 1:10000 incubated at room temperature for 1.5 hours.



T-47D cells were subjected to SDS PAGE followed by western blot with 85189-4-RR (GREB1 antibody) at dilution of 1:10000 incubated at room temperature for 1.5 hours.



Biolayer interferometry (BLI) kinetic assays of 85189-4-RR against Human GREB1 were performed. The affinity constant is 45.5 nM.