

For Research Use Only

# Filamin B Recombinant antibody

Catalog Number: 85202-1-RR



## Basic Information

<b>Catalog Number:</b> 85202-1-RR	<b>GenBank Accession Number:</b> NM_001457	<b>Purification Method:</b> Protein A purification
<b>Size:</b> 100ul , Concentration: 1000 µg/ml by Nanodrop;	<b>GeneID (NCBI):</b> 2317	<b>CloneNo.:</b> 242275B7
<b>Source:</b> Rabbit	<b>UNIPROT ID:</b> O75369	<b>Recommended Dilutions:</b> IF/ICC 1:250-1:1000
<b>Isotype:</b> IgG	<b>Full Name:</b> filamin B, beta (actin binding protein 278)	
	<b>Calculated MW:</b> 278 kDa	

## Applications

<b>Tested Applications:</b> IF/ICC, FC (Intra), ELISA	<b>Positive Controls:</b> IF/ICC : HeLa cells, A549 cells
<b>Species Specificity:</b> human	

## Background Information

FLNB, also named as FLN1L, FLN3, TABP, TAP and Fh1, belongs to the filamin family. FLNB connects cell membrane constituents to the actin cytoskeleton. It may promote orthogonal branching of actin filaments and links actin filaments to membrane glycoproteins. It is an anchors various transmembrane proteins to the actin cytoskeleton. Interaction with FLNA, FLNB may allow neuroblast migration from the ventricular zone into the cortical plate. Various interactions and localizations of isoforms affect myotube morphology and myogenesis.

## Storage

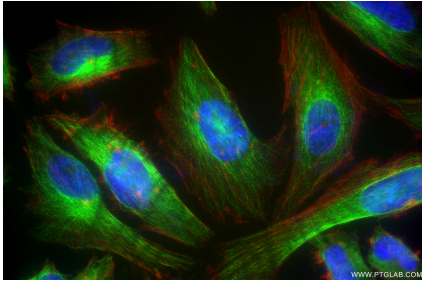
**Storage:**  
Store at -20°C. Stable for one year after shipment.  
**Storage Buffer:**  
PBS with 0.02% sodium azide and 50% glycerol pH 7.3.  
**Aliquoting is unnecessary for -20°C storage**

\*\*\* 20ul sizes contain 0.1% BSA

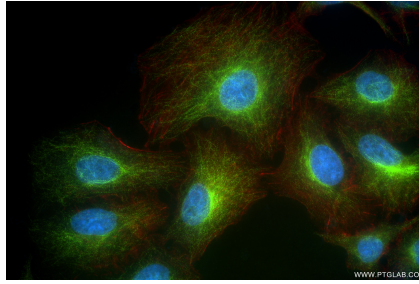
For technical support and original validation data for this product please contact:  
T: 1 (888) 4PTGLAB (1-888-478-4522) (toll free in USA), or 1(312) 455-8498 (outside USA)  
E: [proteintech@ptglab.com](mailto:proteintech@ptglab.com)  
W: [ptglab.com](http://ptglab.com)

This product is exclusively available under Proteintech Group brand and is not available to purchase from any other manufacturer.

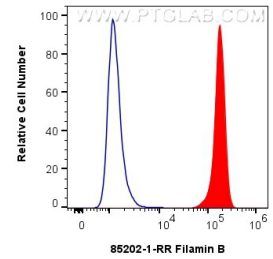
## Selected Validation Data



Immunofluorescent analysis of (4% PFA) fixed HeLa cells using Filamin B antibody (85202-1-RR, Clone: 242275B7 ) at dilution of 1:500 and CoraLite®488-Conjugated Goat Anti-Rabbit IgG(H+L) (SA00013-2), CL594-Phalloidin (red).



Immunofluorescent analysis of (4% PFA) fixed A549 cells using Filamin B antibody (85202-1-RR, Clone: 242275B7 ) at dilution of 1:500 and CoraLite®488-Conjugated Goat Anti-Rabbit IgG(H+L) (SA00013-2), CL594-Phalloidin (red).



1x10<sup>6</sup> HEK-293T cells were intracellularly stained with 0.25 ug Filamin B Recombinant antibody (85202-1-RR, Clone:242275B7) and CoraLite®488-Conjugated Goat Anti-Rabbit IgG(H+L) (SA00013-2) (red), or 0.25 ug Rabbit IgG Isotype Control RecAb (98136-1-RR, Clone: 240953C9) (blue). Cells were fixed with 4% PFA and permeabilized with Flow Cytometry Perm Buffer (PF00011-C).