

For Research Use Only

CPSF7 Recombinant antibody, PBS Only (Capture)

Catalog Number: 85203-1-PBS



Basic Information

Catalog Number: 85203-1-PBS	GenBank Accession Number: NM_001136040	Purification Method: Protein A purification
Size: 100ug, Concentration: 1 mg/ml by Nanodrop;	GeneID (NCBI): 79869	CloneNo.: 242644E1
Source: Rabbit	UNIPROT ID: Q8N684	
Isotype: IgG	Full Name: pre-mRNA cleavage factor I, 59 kDa subunit	
	Calculated MW: 56 kDa	
	Observed MW: 52 kDa	

Applications

Tested Applications:
WB, IF/ICC, Sandwich ELISA, Indirect ELISA, Sample test

Species Specificity:
human, mouse

Product Information

85203-1-PBS targets CPSF7 as part of a matched antibody pair:

MP01956-1: 85203-1-PBS capture and 85203-2-PBS detection (validated in Sandwich ELISA)

Unconjugated rabbit recombinant monoclonal antibody in PBS only (BSA and azide free) storage buffer at a concentration of 1 mg/mL, ready for conjugation. Created using Proteintech's proprietary in-house recombinant technology. Recombinant production enables unrivalled batch-to-batch consistency, easy scale-up, and future security of supply.

This conjugation ready format makes antibodies ideal for use in many applications including: ELISAs, multiplex assays requiring matched pairs, mass cytometry, and multiplex imaging applications. Antibody use should be optimized by the end user for each application and assay.

Background Information

CPSF7, also named as CPSF59, belongs to the RRM CPSF6/7 family. It probable component of the cleavage factor I_m complex (CFI_m) that plays a key role in pre-mRNA 3' processing. CPSF7 binds to cleavage and polyadenylation RNA substrates (PMID: 15489334). This antibody is specific to CPSF7.

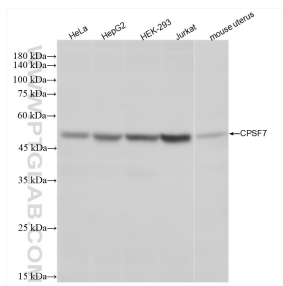
Storage

Storage:
Store at -80°C.
Storage Buffer:
PBS Only

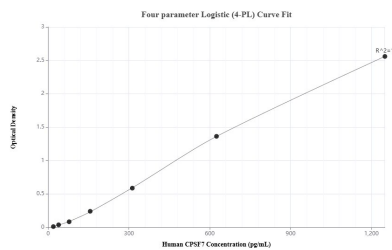
For technical support and original validation data for this product please contact:
T: 1 (888) 4PTGLAB (1-888-478-4522) (toll free in USA), or 1(312) 455-8498 (outside USA)
E: proteintech@ptglab.com
W: ptglab.com

This product is exclusively available under Proteintech Group brand and is not available to purchase from any other manufacturer.

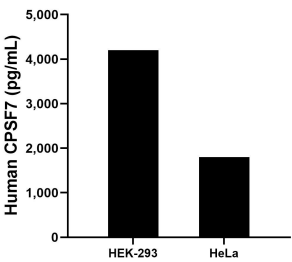
Selected Validation Data



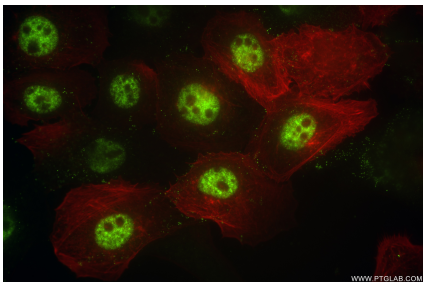
Various lysates were subjected to SDS PAGE followed by western blot with 85203-1-RR (CPSF7 antibody) at dilution of 1:500 incubated at room temperature for 1.5 hours. This data was developed using the same antibody clone with 85203-1-PBS in a different storage buffer formulation.



Sandwich ELISA standard curve of MP01956-1, Human CPSF7 Recombinant Matched Antibody Pair - PBS only. 85203-1-PBS was coated to a plate as the capture antibody and incubated with serial dilutions of standard SY01255. 85203-2-PBS was HRP conjugated as the detection antibody. Range: 19.5-1250 pg/mL



The mean CPSF7 concentration was determined to be 4,199.1 pg/mL in HEK-293 cell extract based on a 2.7 mg/mL extract load and 1,800.3 pg/mL in HeLa cell extract based on a 1.5 mg/mL extract load.



Immunofluorescent analysis of (4% PFA) fixed A431 cells using CPSF7 antibody (85203-1-RR, Clone: 242644E1) at dilution of 1:500 and CoraLite@488-Conjugated Goat Anti-Rabbit IgG(H+L) (SA00013-2), CL594-Phalloidin (red). This data was developed using the same antibody clone with 85203-1-PBS in a different storage buffer formulation.